

Historic, archived document

Do not assume content reflects current scientific knowledge, policies, or practices.

62.41

Newer and Better

DAHLIAS

for

1936

Plants or Roots

JAN 30 1936

U. S. Department of Agriculture

Springhill Dahlia Farm

A. T. EDISON

R. F. D. 2

Phone 7-8212

Grand Rapids, Michigan

PRIZE WINNING SPECIAL PLANT COLLECTIONS

Buy Now! Save from 25% to 50%

Coll. C No. 1

Alice M. Galvin
Arcturus
Barbara Jean
Golden Eclipse
Hillcrest Royalist
Tacoma Beauty
Myra Howard
Satan

8 Plants, Book Value \$6.00, only \$4.00

H. R.

Plant Coll. C 4

Any 6 Plants, Book Value \$9.00, for \$5.00

Chautauqua Regal
Harriet Neal
Laurine Stockwell
H. R. S.

Oriental Glory
Lord of Autumn
Chautauqua
Sunset

Louise Bates

Jane Ross

Princetonian

R. A. Bloomfield

Robert Emmett

The entire 12 Plant Collection, Book Value \$18.00 for \$10.00

C No. 7

Honor Bright
Clara Barton
Monmouth Queen
Olympic Sunset
Bing Crosby
The Fireman

Special 6 Plant Coll.

A \$10.25 Book Value for \$6.00

Plant Coll. C 2

Agnes Young
Cameo
Dixie Ravenscroft
Elite Sunset
Honor Bright
Jerome Kern
Jersey Majestic
Pres. F. D.
Roosevelt
Tercentenary
Jane Dew
Pastel Glow
Palo Alto

12 Plant Special, Book Value \$11.00, only \$7.00
Any 6 Plants .at \$3.50

H. R.

Plant Coll. C No. 5

City of Cleveland
Monmouth
Radiance
Sultan of Hillcrest
Kokomo Sunburst
Keno
Rainbow's End
Col. Lewis
Elissa Landi

This 8 Plant H. R. Collection, Book Value \$19.00, for only \$10.00

C No. 8

Jessie Crawford
Mastodon
Monmouth
Radiance
Black Knight
Dorcas Ann
Keno

Special 6 Plant Coll.

A \$13.00 Book Value for \$7.50

Plant Coll. C No. 3

Any 8 Plants \$6.50

Amelia Earhart
Boy Chick
Frank Lockard
Elissa Landi
Goodacres
Sensation
Kemp's Purple Wonder
Rockley Moon
Ruby Taylor
Ruth M.
Sonny Boy
The Fireman
Sally B.

This 12 Plant Special, Book Value \$15.00, only \$9.00

Honor Roll Plant Coll. C No. 6

Buckeye Queen
Charley Chaplin
California Idol
California Rose
Shalimar
Orange Moon
Hillcrest Nugget
Hunt's Velvet
Wonder
Wenoka
Daddy Kemp

This special 10 Plant H. R. Collection, Book Value \$40.00, only \$20.00

Lot C No. 9

Any 3 Plants \$3.75

Any 6 Plants \$7.50

Amelia Earhart
Chautauqua Regal
Oriental Glory
The Fireman
R. A. Bloomfield
Cavalcade
Pres. F. D.
Roosevelt
Lord of Autumn
Rockley Moon
Louise Bates

Entire 10 Plant Collection \$10.00

Lot C No. 10

Honor Roll Special, 1935 Introductions

Daddy Kemp
California Rose
Bettie Davis
Rockley Moon
Buckeye Queen

Charley Chaplin
Zion's Pride
Shalimar
Wenoka
Hunt's Velvet
Wonder

Any 6 Plants, \$11.50

Entire 10 Plants, Book Value \$31.50, for \$19.00

With your free choice of a plant of Golden Goose or City of Cleveland

Greetings To Our Friends and Customers

We wish to thank our customers for the nice letters received telling us of their success with roots and plants they have had from us. Also for recommending us to their friends and flower lovers. Our catalogue will be sent to any of your friends upon receipt of their names and addresses. We do not continue sending our catalogue after two seasons without some response from you, but if you still wish it, a card will bring it to you.

From all indications the coming season (1936) will be a busy one and I urge you to order early so as not to be disappointed, as we fill our orders in rotation and many of the newer ones, we can only spare a few of each. Several last year's customers have ordered already from the gardens.

To anyone sending in an order of \$2.00 or more and the names of three or more friends growing dahlias, we will add a root or plant of 50c or more value. We expect to grow not less than 15,000 plants the coming season. Club your orders and get more extras.

I grow over 500 varieties, having added 100 this season. Many of these were grown in my garden in 1935. Hundreds of my customers and friends visit my gardens and field during blooming season, and I want you to be one of them, as visitors are always welcome.

We grow and sell our own roots and plants retail, also wholesale, to growers using their private letter heads. No extra wholesale trade discounts on plant or root collections.

Do not miss our plant collections on inside front cover and root collections on inside back cover. We specialize in good plants and collections.

Thanking you for all past favors and hoping to be of service to you in the coming season.

Yours respectfully,

A. T. EDISON, Mgr.

Michigan — The Great Dahlia Supply Market

Michigan is now recognized as one of the leading Dahlia growing States. Soil and climate conditions have proven ideal for the scientific culture of strong, healthy roots and green plants. We invite you to visit our gardens next fall during blooming time. Also plan to visit the new trial gardens at East Lansing, Mich., in September.

Quantity Discounts

3 of any one variety of roots or plants, deduct.....	10%
6 of any one variety of roots or plants, deduct.....	20%
12 of any one variety of roots or plants, deduct.....	25%

Every order we get over \$3.00 will get some root or plant free.

Extra Stock will be given on all orders as follows:

Orders amounting from \$ 5.00 to \$10.00	10%
Orders amounting from 10.00 to 25.00.....	15%
Orders amounting from 25.00 to 50.00.....	20%
Orders amounting to over \$50.00.....	25%

These extra stock allowances cannot be taken as cash discounts and do not apply to any Special Collections.

OUR GUARANTEE

We guarantee all stock purchased from us to be true to name and delivered in good condition, and any stock received otherwise will be cheerfully replaced or properly adjusted. Not responsible in any case for more than the purchase price.

Our Green Plants

We are fully equipped to grow the best of plants, having a new 25½ x 50½ ft. King semi-steel greenhouse, also a new cool greenhouse to grow and harden up the plants before shipping. We guarantee safe delivery of the plants in good growing condition and true to name, and will replace any found otherwise, but owing to the difference in soils, fertilizer used, climatic conditions and care of growing the plants, further guarantee of plants ceases. We received letters from customers from California, Oregon, and many eastern and southern states telling of the fine plants received and of the strong growth made and large flowers they had. Our early plants and most all the late plants (of July 1st) had just as good roots in the Fall as root grown plants did, and earlier bloom, and we recommend them to our customers. The plants should always be planted deeper than roots, from 6 to 8 inches deep, and the holes gradually filled in as the plants grow. Try our plants and be convinced. Collections are made to reduce cost to you and to please you.

Information

We are a member of American Dahlia Society, Dahlia Society of Michigan, Virginia Dahlia Society and Indiana Dahlia Society, and we urge you to join a Dahlia Society if you have not already done so. Complete cultural directions inclosed with each plant or root order.

Largest grower of Pom Poms in the Middle West.

ORDER EARLY—As orders are filled in rotation—field-grown roots or thrifty plants if ordered—ordering early will insure the reservation of varieties that later may be sold out. Orders are filled with varieties called for, and unless substitution is asked, I never substitute. Please make your orders \$2.00 or more, if possible, as it costs us just as much to handle a small order as one from \$5.00 to \$10.00. The same amount of work as packing cartons, handling, inspection, etc., is required.

TIME OF SHIPMENT—Unless otherwise ordered, tubers will be shipped between April 15th and May 1st (plants can be had up to June 10th), by express or insured mail at my expense, on all orders over \$2.00; under \$2.00 add 15c for postage. If Special Delivery or Extra Handling is wanted on plants, add 25c extra. It hastens delivery on plants.

TERMS—Cash with order unless parties are known to me. No goods sent C. O. D. unless 50 percent of purchase price accompanies order. We will hold your order for you if a deposit of 25% is made, balance to be remitted before shipment is made.

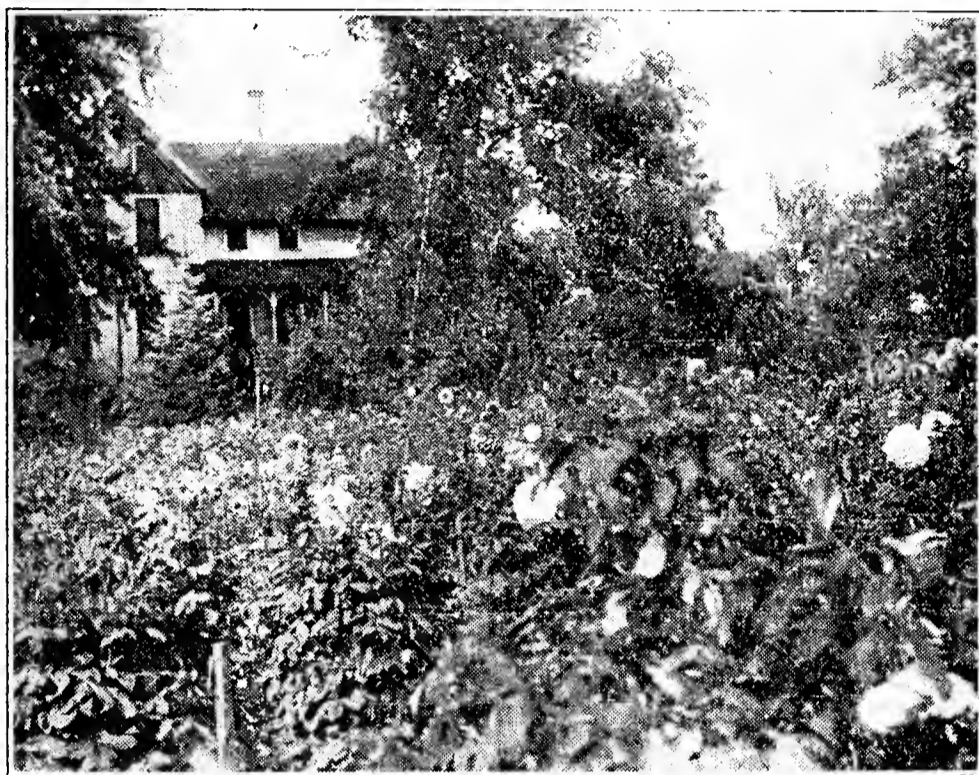
REMITTANCES should be made by bank draft, postoffice money order or registered letter. Postage stamps accepted up to \$2.00. Coin should not be sent by letter unless registered.

ERRORS—While my system for handling orders is as near perfect as possible, yet in the rush of business, errors are possible to occur, and I wish to be promptly notified of such and will at once make same satisfactory. Make all complaints to me, not to your friends, as we aim to please.

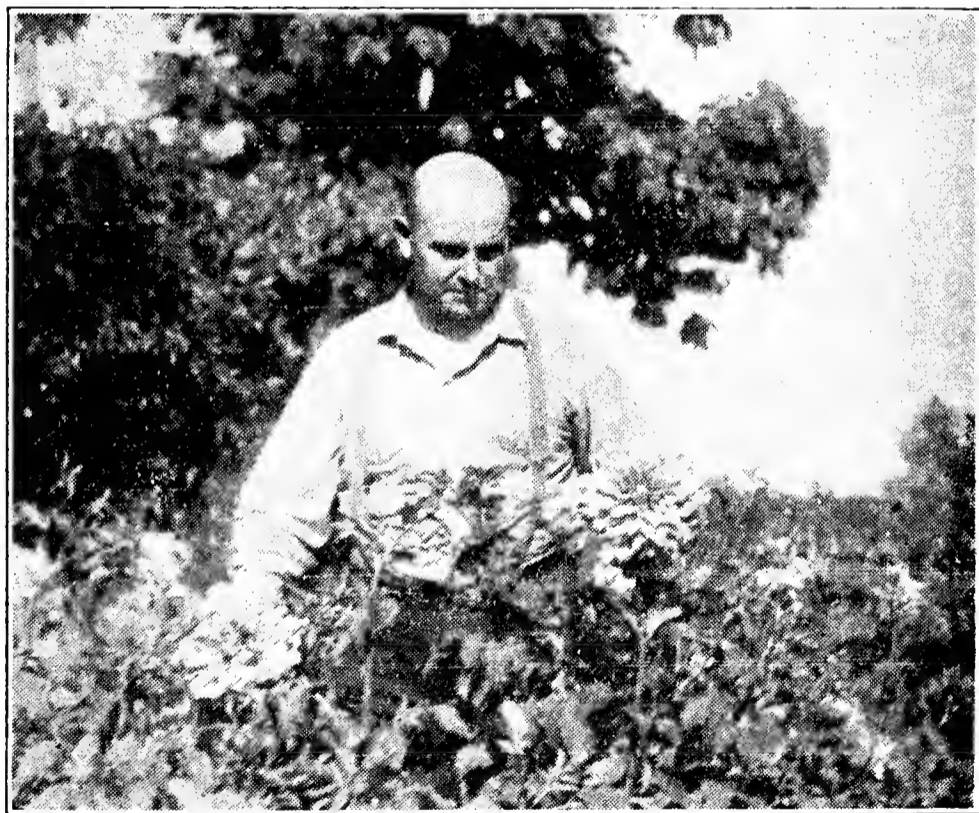
NAME AND ADDRESS—Remember to write your **Name, Postoffice, County and State**, also give **Street Number** or **P. O. Box** as plainly as possible.

New 1936 Honor Rolls

We expect to grow plants of many of the 1936 introductions, but owing to the fact we are getting our catalogue out early this season we can not list the new ones we will grow. We will furnish a list to anyone interested in the New Honor Roll plants we are growing after February 15th. We will furnish a list of what we have upon request after March 1st.



Home of Springhill Dahlia Farm and Section of Dahlia Show Garden



A. T. Edison holding a "Honey Dew"

CLASSIFICATION OF DAHLIAS

Formal Decorative Dahlias (F. D.). Informal Decorative Dahlias (I. D.). Incurved Cactus Dahlias (I. C.). Recurved and Straight Cactus Dahlias (R. C.). Semi-Cactus Dahlias (S. C.). Peony Dahlias (Peo). Ball Dahlias (Ball). Show Dahlias (Show). Pom Pom Dahlias (Pom). Miniature (see page 24).

Abbreviation H. R. after Dahlia indicates an Honor Roll Dahlia.

Roll of Honor Dahlias

Achievement Medal Winners and Other Blue Ribbon Dahlias of Recent Introduction

ACHIEVEMENT (Ballay, 1932), I. D.

A huge flower of gold with bronze shadings, petals curl and twist into a huge ball as deep as it is wide. Long sturdy stems.

Roots \$1.00

ADIRONDACK SUNSET (Cackener-Parkway Dahlia Gardens)

This aptly named variety has about everything a Dahlia can offer—color, form, personality, and splendid growing habits. The color is a brilliant scarlet red with golden tips, the centers being tipped golden orange.

Plants \$2.50, Roots \$5.00

ADORABLE (I. D.) (Angell, 1935)

The color of this beauty is pinard yellow, outer petals flesh pink, and a prolific bloomer. Has a good stem and good growing habits. This variety scored 86 at the Storrs trial garden.

Plants \$2.50

AGNES L. YOUNG (Young), I. D.

A brilliant red flower with gold tips and gold reverse, with twisting petals which cause the appearance of golden lights through the flower. Medium height plants, heavy foliage, good stems and large flowers.

Plants \$1.00, Roots \$2.00

AIKO (Dahliadel), S. C.

Carmine red with silver reverse. Good stems, fine foliage, phenomenal flower, tending to vary in form at times to informal decorative. Those coming true semi-cactus need fear no competition if well grown. Very large.

Plants 60c, Roots \$1.25

AIR-MAIL (Kanouse), I. D.

One of the finest lavender Dahlias we have yet seen. Here is one of the best keepers on the market today and the stems are long and stiff, holding the blooms nicely on top, well out from the bush.

Plants 50c, Roots \$1.00

ALLEN A. (Angell, 1933), I. D.

A very large, beautiful white with lilac shadings; base of petals show a slight trace of Martins yellow. Has good stout stems and profuse bloomer; scored 84 at Trial Grounds, Storrs, Conn.

Plants Only \$1.00

ALYCE MARIE GALVIN (Galvin), F. D.

A beautiful white with faint tones of cameo pink on outer petals. 11-inch flower awarded Certificate of Merit at Storrs, winner of first prize at The Boston Show and Silver Medal for the best undisseeded seedling. A real grand Dahlia. A free and prolific bloomer.

Plants 75c, Roots \$1.50

ALTA RAY (Burch), I. D.

On Sunkist Roll of Honor with a score of 90. A grand Dahlia, somewhat resembling Jane Cowl with the ideal well rounded center of the oval decorative. The color is orange chrome.

Plants \$.75

AMERICA'S SWEETHEART (1935), I. D.

Salem Dahlia Gardens, and is one of the greatest yellow Dahlias to date; pure in color without a particle of shading. The outer petals do not fade out like some yellows. Flower is very deep and from 10 to 12 inches, with a nice high center. Bush is robust and of medium height, with the large flowers nicely on top, of long stiff stems. Visitors who viewed this Dahlia in the originator's garden claimed it the best to date. (H. R.)

Plants \$5.00, Roots \$10.00

AMELIA EARHART (Cordes Eastman, 1933), S. C.

One of the greatest prize winners to date. Won two Home Achievement medals the first year shown and many first prizes in 1933. Very large, artictically formed combinations of apricot buff, with primroses at the base of the petals. Tints and sometimes stripes of salmon throughout the flower. (H. R.)

Plants \$1.25, Roots \$2.50

AMERICAN LEGION (Nuneviller, 1932)

Winner at Atlantic City of the American Home Sweepstakes Medal, The Auditorium Gold Medal for the best undisseminated seedling. In Camden it won the largest bloom class. Color, bright yellow, and is held on good stems. (H. R.)

Plants \$.75

ANDREA ERICSON (Fisher & Mason, 1931), I. D.

Made good in all parts of this country as well as in foreign countries. PURE WHITE exhibition Dahlia. The huge flower is composed of broad oval petals with pointed and slightly twisted tips, which gives the flower a fluffy appearance. (H. R.)

Roots \$1.00

ANNA BENEDICT (Benedict-Dahliadel), I. D.

Outstanding in vases at the New York and Camden Shows, as well as at Storrs and the New York Botanical Gardens. A dark rich velvety carmine shading to very dark almost black center. This is an upright, clean grower, with splendid keeping flowers. Will score very high with the new American Dahlia Society score card.

Strong Plants \$2.50

APRICOT GLOW (89), LL., 5 ft., I. D.

One of the most beautiful Dahlias we grow. A blended iridescent pink hard to describe. Just imagine a tall bush loaded with seven to eight blooms on tall stems and you have it. A wonder.

Roots \$1.00

ARCTURUS, F. D.

A star of the first magnitude. Received Certificate of Merit at Storr, 1933. This variety produces high quality flowers. A scarlet red suffused deep yellow and with yellow reverse. The stems are uniformly good and of proper length. Arcturus is a strong grower and good keeper when cut.

Plants 75c, Roots \$1.50

BAGDAD (Redfern, 1931), I. D.

A flaming scarlet-red at last, and never in any Dahlia have we seen such vivid color. It is a beautiful flower. (H. R.)

Roots \$.75

BARBARA JEAN (Kokomo Dahlia Gardens), I. D.

A flower that immediately attracts attention; a magnificent color, pansy purple, changing to tyrian rose, with the tips a mallow purple. Flowers are large and the keeping qualities are excellent. They will last a week after cutting. An informal decorative that you will like.

Plants 75c, Roots \$1.50

BETTY COLTER (Success, 1932), I. D.

One of our favorites among the new Dahlia. The color is distinctive and pleasing, an even shade of light salmon red throughout, shading to old rose at base of the long rolled petals. The flower is nicely formed on good stems. This variety should appeal to those who like something different in their gardens. (H. R.)

Plants 60c, Roots \$1.25

BETTIE DAVIS (Cordes, 1935), S. C.

Won as Best and Most Perfect Bloom in the Los Angeles show and Achievement Medal at Baltimore. First Semi-Cactus at Bryn Mawr and Best Semi-Cactus Seedling at Camden. The color is orchid lavender. Won seven first prizes. (H. R.)

Plants Only \$2.50

BETTER TIMES (Stredwick, England), S. C.

Cactus semi-incurved. A very strong growing plant with the largest of blooms; long, strong stems, color lilac pink, yellow center.

Strong \$1.50

BING CROSBY (Stephenson), I. D.

Color Golden Yellow penciled with carmine. A seedling of La Fieste, carrying the same general tones but the colors are deep and more pronounced. The flower is larger and much deeper, with a high center; the stem is perfect, carrying the bloom erect and facing you. Achievement Medal winner at the Los Angeles show, 1934.

Plants \$2.50

BLACK KNIGHT (See Kemp's Black Knight)

BLUE TRAIN (Burkhart, 1934), F. D.

Medium to large sized flower of perfect formation, held on stiff stems. A deep lavender to bluish shade of purple.

Roots \$.75

BOYCHICK (Farrella-Hulin), I. D.

Color, garnet red at center, shading to a lighter red at the edge of petals, with silvery streaked reverse, which adds more to the beauty of the flower. Flowers can easily be grown to 10 inches in diameter and stand erect on fine stem. An early and prolific bloomer. Boychick is not only a dandy Dahlia, but a good seed producer, and a fine cut flower as well. Bush grows about five feet tall, with insect resisting foliage.

Plants \$1.25, Roots \$2.50

BUCKEYE BRIDE (Golden Rule, 1932), I. D.

Geranium salmon pink. The best cut flower of them all. Three foot stems. (H. R.)

Plants \$50c, Roots \$.75

BUCKEYE KING (Golden Rule, 1934)

A very large, clear growing amber yellow that won wherever exhibited. Stems are long, always good with all flowers facing. The bushes are very vigorous and all the same. Disbudding should be thorough to the base of each lateral. The flower is perfect formal type and was a sensation at all shows. On Mr. Hart's Roll of Honor.

Plants 75c, Roots \$1.50

BUCKEYE QUEEN (1935), F. D.

A formal decorative in lavender. The first of its type and color with a substantial and large flower. Good for exhibition and cutting.

Plants \$3.00, Roots \$6.00

BURR McINTOSH (Burch, 1933), I. D.

A large, fine primrose yellow, held on long stiff stems high above the foliage. Flowers from 8 to 10 inches without debudding.

Plants \$1.00, Roots \$2.00

CAMEO (F. & M.), I. D.

Here is real beauty of true coral pink color deepening toward center; petals overlaid with a sparkling golden sheen; very large flowers.

Plants 75c, Roots \$1.50

CAPE MAY (A. D. F., 1935)

1934 Show winner. This wonderful new Dahlia was originated by The American Dahlia Farms. It is an incurved cactus of a beautiful violet rose with a most artistic, twisted, white center. Won over all comers in the cactus class at the Bryn Mawr 1934 Show. One grew to eleven inches here with us in 1934. Highly praised whenever seen.

Plants \$3.75

CARDINALIS (Jas. Kennedy, 1931), F. D.

Large, attractive flower. True to its name, this Dahlia is a brilliant cardinal red. An upright grower with good long stems. (H. R.)

Roots \$.75

CHARLIE CHAPLIN (Petria Chappaqua), 1935

A very large flower of deep gold shading to a bronze center. Will give any of the large ones a run for their money. Exceptionally strong grower and prolific bloomer with very long, straight stems and tough, insect resistant foliage. Certificate of Merit at Storrs, 1934. Dahlia Roll of Honor, 1934.

Plants \$3.00, Roots \$6.00

CAVALCADE (Groll-Dahliadel, 1935), F. D.

Bush 5½ ft. A fine variety that should have a real future. In form, this Dahlia resembles Jersey's Beauty and its stems are almost identical. It is, however, larger in diameter and two or three shades darker. Cavalcade is a rich deep rose with tones of rosy magenta.

Plants \$2.00, Roots \$4.00

CALIFORNIA IDOL (Ballay, 1935), I. D.

Another giant yellow with a coast-to-coast show record. Has been called the "yellow Murphy's Masterpiece", and, brother, if it is to the yellow class what Murphy's was to the red, won't that be sumpin'. Color true, clear glistening yellow, a true pastel shade.

Plants \$5.00, Roots \$10.00

CALIFORNIA ROSE (Ballay, 1935), I. D.

Clear bright salmon rose. Exquisite coloring, large, tall-growing., describes in a few words the salient features of this unusually satisfactory new Dahlia. Included in Mr. Hart's annual Roll of Honor. It was one of the best keepers on trial this year. Flower large, but extremely graceful.

Plants \$3.75, Roots \$7.50

CHAMPOEG (Crites, 1932), I. D.

Most beautiful of the recent introductions. The ground color of the petals being a lemon yellow with a suffusion of deep rose pink, as though an artist had delicately brushed each petal. Free flowering early, and has stiff stems. (H. R.)

Roots \$1.00

CHAUTAUQUA REGAL, F. D.

The color is an unusually rich and brilliant cardinal red with the reverse of petals shaded ivory. Small petaloids showing toward center of flower also shaded ivory. The bloom is truly magnificent, of the largest size on cane stiff stems and facing the sky. Also particularly long lasting when cut.

Plants \$1.50, Roots \$3.00

CHAUTAUQUA SUNSET (Wallace, 1933), I. D.

One of the finest Dahlias ever originated. The flowers are of mammoth size, facing the sky on long cane-like stems. A magnificent combination of sunset colors—gold, orange and peach-red. The bush is exceedingly robust and compact. It was, by far, the showiest and most compelling Dahlia in our Gardens this past year.

Plants \$1.50, Roots \$3.00

CHIEF JUSTICE (Sampson, 1932), I. D.

A monster flower on cane-like stems that are long and hold the giant flowers erect. Color, soft chamois, with soft rose suffusion. A fine exhibition variety.

Plants 75c, Roots \$1.50

CITY OF CLEVELAND (Bissell, 1935), I. D.

A Certificate of Merit winner at Storrs in 1933. Bright scarlet splashed with orange. Late in the season the flowers were an intense orange with a slight blush of gold. It has been a splendid Dahlia in my own collection through the season. A vivid spot of color.

Plants \$2.50, Roots \$5.00

CITY OF MONTREAL, F. D.

A very attractive flower of large size, the color is Aster purple, reverse mall or purple, stems are perfect, a profuse bloomer from early to late, and a good cut flower. A strong, robust, low growing bush and ideal for the border.

Plants 60c, Roots \$1.25

CLARA BARTON (Salem Dahlia Gardens, 1934), I. D.

An immense bloom facing slightly upyards on a long, straight stem, twelve inches to first set of leaves. Face of petals silvery orchid, reverse of petals deep lavender; general effect lavender. Bush growth medium height; a very prolific bloomer that never stunts.

Plants \$1.50

COLONEL LEWIS (Provins, 1935), I. D.

Here we have a winner, in a deep rose pink, reverse same color; an early bloomer with the best of stems, and foliage. A vase of three blossoms was judged the best at West Virginia Show.

Plants \$2.00

CONSERVATRIX (Carlee), S. C.

This is one of the most artistic of the European varieties. Color a bright geranium red. The blooms are held facing sideways, on long stiff erect stems, will keep a long time when cut, and is an early and free bloomer. Plant grows to about five feet in height.

Plants \$.60

CORNELIA BRYCE PINCHOT (Veile & Mendham), I. D.

One of the richest Dahlias in color we have seen. It is a glowing burgundy red on a heavy, very deep flower. It won the largest and best seedling at Chicago in 1934; at Bryn Mawr it won as largest and best bloom.

Plants \$3.75

CROYDON (Brand-Kemp, 1932), I. D.

One of the largest and best new pure whites for exhibition. 10 to 12 inch flowers. Strong stems hold flowers well above the foliage.

Plants 50c, Roots \$1.00

CROYDON GLORY (Kemp, 1935), F. D.

Of the formation similar to Monmouth Queen, but of slightly different tone of yellow. Blooms are a little larger than Monmouth Queen. One of the best of the newer varieties.

Plants \$1.75, Roots \$3.50

CROYDON SUPREME (Kemp, 1935) F. D.

Flowers medium to large, of good depth and are produced in profusion on a strong plant. Stems strong and straight. Color, orange buff, shading to lighter hue of orange buff at tips of petals. Reverse of petals, rose pink. A fine all-around Dahlia, including exhibition.

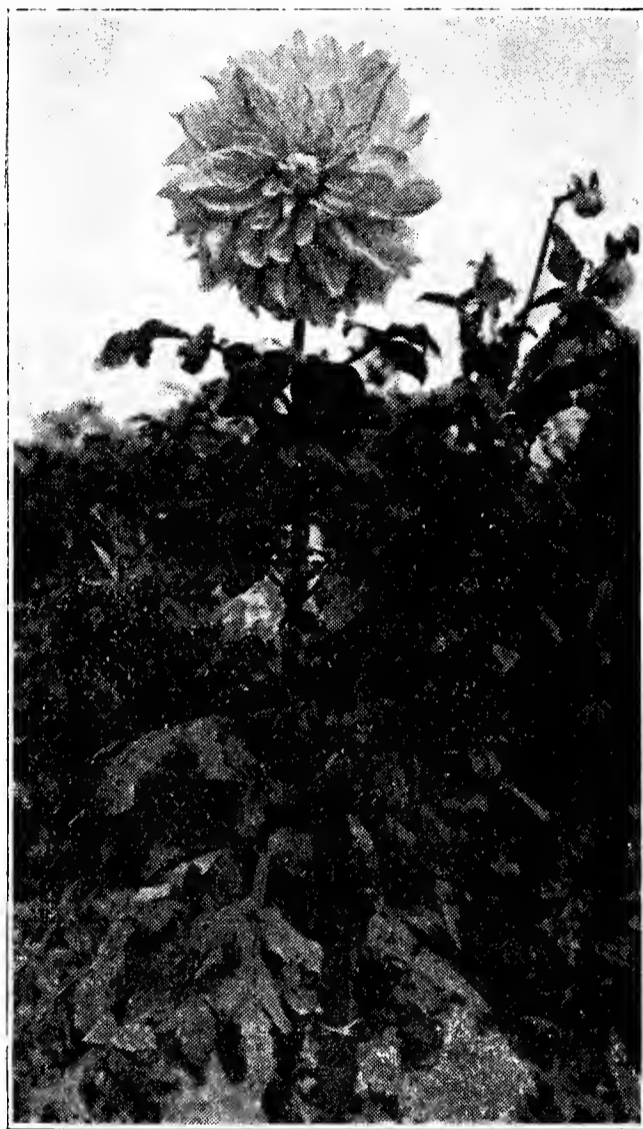
Plants Only \$1.75

DADDY KEMP (Kemp, 1935), F. D.

This is every inch a man's flower, and one of the most spectacular introduced in recent years. The flowers are of immense size, often 14 inches or over in diameter, and from five to seven inches deep. The color is a rich purplish red. Should be grown to four stems to make these strong enough to hold the flowers.

(H. R.)

Plants \$2.50, Roots \$5.00



Croyden Glory

DAISY TURNQUIST (Hulin 1935), Q. D.

A fine salmon pink, held on long stems. The long petals turn and twist, making it very artistic. Won several prizes.

Plants \$2.00, Roots \$4.00

DELWOOD'S GLORIOUS (Delaporte, 1935)

A blending of rose shades; scored 83½ at Storrs.

Plants 75c, Roots \$1.50

DIXIE RAVENSCROFT (Hendrick), I. D.

An immense flower of glowing flame, with a bright gold reverse, the petals are long, and twist slightly at the tips, adding grace to the huge blooms which are also of great depth. They are held facing sideways on long, stiff, cane-like stems, well out of and above the large, heavy-leaved foliage, which is insect resistant. A strong growing as well as vigorous bush, of medium height. Average height about five feet.

(H. R.)

Plants \$1.00, Roots \$2.00

DOKOUPIL'S TRIUMPH (Czechoslovakia), I. D.

Extra large flowers of straw color shading to light amber at base of petals. Stems from 15 to 20 inches and perfectly rigid. This will make a wonderful showing in the garden or exhibition room.

Strong Plants \$1.25

DORCAS ANN (Dahliadel, 1935), S. C.

One of the most attractive semi-cactus Dahlias it has been our pleasure to see growing. Plants are medium to tall and laden with flowers. Color is pink with rose suffusions and sulphur yellow shadings at center. Exceptionally fine for cutting and baskets having long, strong stems. As beautiful as Paul Pfitzer and a fitting companion.

Plants \$2.50

DR. JOSEPH SCHEINER (Dakoupilova), S. C.

Here is a Dahlia that is a real as well as distinctive novelty, not only on account of its large size and great depth, but by its formation, which resembles huge chrysanthemums and attracts everyone to it. The color is a soft lilac and overcast with a soft rose glow, the huge blooms are held erect, facing the heaven on top of good, strong, stiff stems, well above the medium growing plant.

Plants \$1.00

DWIGHT MORROW (Dahliadal, 1931), I. D.

A gigantic cardinal red Dahlia much admired by visitors for its rich color. (H. R.)

Plants Only \$.60

EAGLE ROCK FANTASY (Broomall Success, 1931), I. D.

Clear mallow pink of great size and depth. One of the finest introduced in 1931. (H. R.)

Plants 75c, Roots \$1.50

EAGLE ROCK PEACH (Groomall Success, 1933), D.

Large deep rose pink with size and beauty combined and good stems. Variety should be planted early. (H. R.)

Plants \$1.00

EAGLE ROCK PRINCE (Broomall Success, 1933), F. D.

Rich and distinctive. Color yellow ochre with back of petals jasper red, giving it a coppery sheen. Fine plants; prolific bloomer, held on good stems. (H. R.)

Plants \$.75

EDITH EASTBURN SIMONS (Peacock), S. C.

At last we have found a Dahlia that at least approaches "Elsie Daniels." Soft lavender-pink and white blended in a remarkable bloom. Fine stem and foliage. For exhibition, grown to four canes.

Plants Only \$1.00

EDITH MENCKE (Kemp, 1935), I. D.

This large and attractive Dahlia is orange buff in color, with slight sheen of pink on the older petals. Blooms are 10 inches and over in diameter, of good depth, and are freely produced on plants of strong growth. Stems are long, stiff, and hold the flowers facing front, high above the glossy foliage. A fine Dahlia we can unreservedly recommend to our friends and customers. Stock limited.

Plants \$3.00

EDWARD REINFLEISCH (Reinfleisch), F. D.

This is one of the best reds. A magnificent flower of glorious hue held erect on sturdy can-like stems.

Plants 75c, Roots \$1.50

ELINOR M. RADDELL (Felsing), I. D.

A new color combination; lovely shell pink shading to deep rose at center. It is a fine, clean growing Dahlia. Certificate of Merit, Storrs, 1932. Mr. Hart, in his Honor Roll of 1933, says: "It is very beautiful." We need more Dahlias in this color class and this is a very welcome addition.

Plants 75c, Roots \$1.50

ELISSA LANDI (Cordes-Eastman), F. D.

Bright coral self color, very attractive, held on long straight stems well out of the foliage. Does not fade or burn. Prolific bloomer. Nine-inch flowers are thick, making it almost ball-shaped flower.

Plants \$1.25

ELITE SUNSET (85), I. D.

A very beautiful variety. Color, yellow center and out petals rose. Very attractive, and strong grower, medium tall growing.

Roots \$1.00

ELIZABETH MOULTON (1934), F. D.

A grand, large new waxy white, slightly shaded pink when first opening, but the pink disappears. Large petals, perfect petals and very attractive.

Plants \$1.00, Roots \$2.00

ELSIE SWOBODA, F. D.

Beautiful rose pink with chrome yellow center.

Roots \$1.00

FANNY SANDT (V. & M.), S. C.

Color rose pink. One of the most beautiful formed varieties in this class. A color that fairly dazzles in the sunlight, and shows up brilliantly under artificial light. The blooms are of large size, and of good depth. Stiff stems, well above and out of the foliage.

Roots \$1.00

FAY BEATON, I. D.

A new white from Canada. Here is a color that at once attracts, being a creamy white of most beautiful formation. The petals are long and pointed, the large flowers are held at a nice angle above a medium size bush on long stiff stems.

Roots \$1.00

FOREST FIRE (Dahliadel, 1935), I. D.

The most "different" and for that reason the most distinctive of all the novelties. A brilliant scarlet flame with blushes of yellow; yellow petaloids. Effective, striking, spectacular.

Plants \$2.50, Roots \$5.00

FRANK LOCKARD (Lockard-Vin-Well), F. D.

Bush 5 feet, bloom 8 x 5 in. This Dahlia, introduced in a limited way in 1933, has met with favor where known. Color, true purple on a 100 percent perfect stem. We feel it will be a favorite when better known. Certificate of Merit at Storrs, 1932.

Plants \$1.25, Roots \$2.50

FRANK SERPA (Serpa), I. D.

Winner of American Home Achievement Medal at San Francisco. Decidedly large flowers on extra good stems. Color very pale pink, stained wine red; sometimes greatly concentrated on the tips. Attractive and distinctive. One of the finest.

Plants \$3.00

FRAU D. BRACHT (Berger), F. D.

A Holland variety. Distinctive form and clean cut. The color is clear pale primrose, very clean and graceful in effect. (H. R.)

Plants \$.75

FRED SPRINGER, F. D.

Here is a new Dahlia and one that will be in great demand as a border Dahlia. It is a dwarf grower, growing to a height of two feet with distinct fine cut foliage with large scarlet red flowers, with short stems that cover the bush and stay on the plant a long time, giving the plant the appearance of a rose bush with gigantic roses. None better for a border or as a hedge.

Roots \$.75

FROLICHE PFALS (Berger), S. C.

This is an outstanding, as well as a very striking one. Picture a Dahlia like this, and you have a fair idea of its beauty. A light purple, tipped white, when it comes to sheer beauty, very few if any can rival it. The blooms are of good size, and held facing sideways on good, strong wiry stems, well above the foliage. Plant averages about 4 feet.

Plants \$.75

FULL MOON (Ballay), F. D.

Massive flowers of bright canary yellow with broad flat petals. Upright stems. Wins as "largest in show." H. R. in 1933.

Plants Only \$.60

GABRIEL (Ballay), S. C.

Carmine pink, or what might be termed "water melon." This variety is an early and free bloomer, and the blooms are really spectacular. Very large and deep, they lead the garden in interest in the early season.

Roots \$.75

GIRL OF HILLCREST (Scott, 1932), F. D.

Bright mikado orange, one of the best of its color. A strong grower and great favorite. (H. R.)

Roots \$.50

GOBLIN'S DREAM

A beautiful new yellow brown, not large but long stemmed and fine for cutting.

Roots \$.75

GOLDEN ECLIPSE (Badetty), F. D.

A 1934 Honor Roll introduction with a Certificate of Merit. Color is a golden yellow with a salmon blush. Produces 8 to 10 inch flowers freely on long stems.

Plants 75c, Roots \$1.50

GOLDEN STANDARD (Downs, 1935), S. C.

Golden tan, brushed with tints of bronze and apricot. One of the most distinctive Dahlias of the year. Strong stiff stems hold flowers well.

Plants \$2.50

GOLDEN GOOSE (Kokomo-Betscher, 1935), F. D.

Pure gold of an even shading all over. Flowers 8 to 9 in. Plant 6½ ft. when topped out. A lovely Dahlia of a clear golden color on excellent stems, 4 to 5 feet in length. Here is a flower that will keep when cut, as good as any Dahlia you have ever grown. Golden Goose plants must be topped out, unless you wish to use a stepladder. A rank grower, prolific bloomer and fine root producer.

Plants \$2.50, Roots \$5.00

GOOD WILL (Nuneville), S. C.

An attractive flower of large size, color violet rose with bright rose shadings and center touched with sulphur yellow. A long petaled variety, slow in opening, with a tendency to close slightly at night. The stems are long, slender and wiry. Keeps well when cut. A beautiful flower for many purposes.

Plants \$1.25

GOLDEN GOBLIN (Goodacre), I. D.

A rich gold of perfect formal type. Good large blooms, not over size. A grand flower, on good stems, and every one should have it.

Roots \$.50

GOLDEN HEART (Kemp, 1933), F. D.

The purest golden yellow Dahlia we have ever seen, and withal the most beautiful. Blooms very large, many attaining to 12 inches across, and 5 inches and over in depth, and are held high above the foliage on good stems. A tall grower, prolific bloomer. A gem of unusual merit.

Plants 75c, Roots \$1.50

GOODACRES SENSATION, C.

A light brick red to strawberry shade. Very large. The best Cactus we have had to date.

Plants \$1.75, Roots \$2.50

GOODNIGHT (Broomall Success, 1931), I. D.

We find in this variety a monster in size and the rich color of oxblood red shaded maroon; is the greatest attraction in the garden and in the show room. A sure winner. (H. R.)

Roots \$.75

GRACE CURLING (Stredwick, 1931), I. D.

A glorious decorative of very large size, imposing and beautiful in form and color. The latter is white at base, then changing to lilac pink and rose. Huge broad florets, bluntly tapering and tastefully notched at tips. No disbudbing or trimming to have equally as large blooms at the end of the season as when they first bloom. Perfect stems. (H. R.)

Roots \$.75

GRANDEE (Ballay, 1934), I. D.

Nopal red, shaded orange yellow. Winner 1933 American Home Achievement Medal at San Francisco, and Largest Flower at California Flower Festival. Plants grow about 4½ feet tall and have four or five 12-inch blooms at once. Beautiful coloring. Good formation. First-class stems.

Plants \$1.25, Roots \$3.00

HANS BERGER (Berger), S. C.

A very pretty, neat and striking flower, color a clear vivid orange, with white tips. The flowers are not very large, but what they lack in size they make up in quantity. They are held facing at a forty-five degree angle, on strong, straight, wiry stems, well above the foliage. The plant, which averages about 4 feet in height, is a free and constant bloomer.

Plants \$.75

HARRIET NEALE (Wickersham) I. D.

A 1934 introduction of rich gold. It is an early and profuse bloomer, with ideal foliage. This variety has been described as a "golden Marmion," enough in itself to warrant including it in the ideal Dahlia garden. On the 1934 Honor Roll.

Plants \$1.50, Roots \$3.00

HARVEST MOON, F. D.

A wonderful bushed dwarf Dahlia with large flowers held well above the foliage on stout stems. The broad thick petals curve back toward the stem, making it almost a ball. Color, a clear deep surplur to golden yellow. A prize winner with awards.

Roots \$1.00

HEITCHEW'S BEACON, F. D.

Attractive new Chinese red seedling of Jersey Beacon. Strong grower, good size.

Roots \$1.00

HILLCREST FLUFFY RUFFLES, I. D.

Our favorite of all the Hillside varieties we grow. The color is a soft apricot, beautiful and rare. The blooms are extra large and the petals are fluffed and curled. Bush is sturdy.

Plants \$1.00, Roots \$2.00

HILLCREST MANDARIN (Scott), I. D.

A flashy big flower, brilliant oriental scarlet and golden yellow, one of the brightest color combinations I have ever seen in a Dahlia. The plant is a thrifty grower and a free bloomer.

Plants 75c, Roots \$1.50

HILLCREST NUGGET (Scott, 1934), I. D.

A giant, on excellent stems. Bronze with a reddish reverse. One of the best I saw this season. Stems hold flowers high above the bush. Winner of Certificate of Merit and on Hart's Honor Roll.

Plants \$2.50

HILLCREST ROYALIST, I. D.

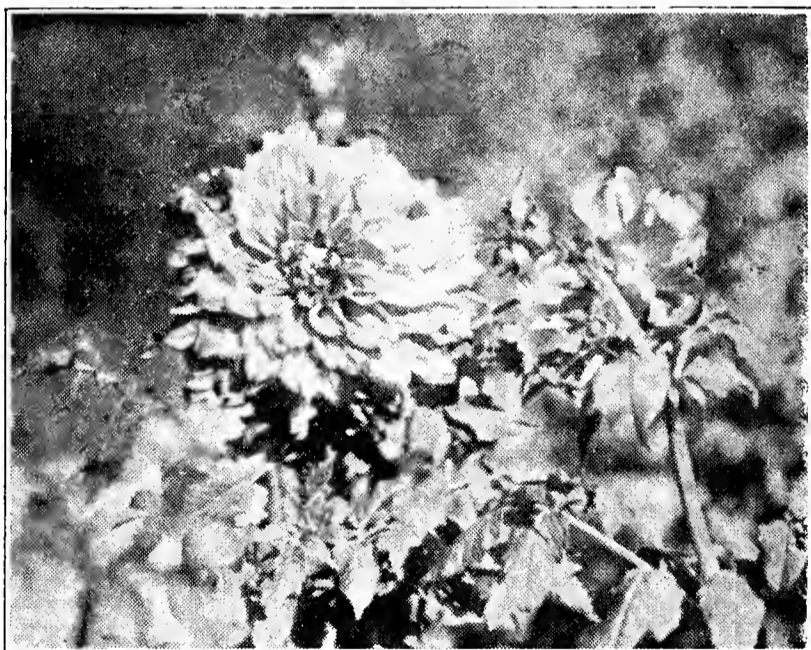
A huge, richly colored flower of Burgundy wine red with a background of vermillion-violet—a most striking combination. Our blooms of this variety averaged 10 to 12 inches under ordinary culture and were the admiration of all visitors. A strong, healthy, vigorous plant in every respect. On the Honor Roll in 1932.

Plants \$.75

HILLCREST SWISS ROSE, I. D.

Another worthy introduction of Dr. Scott. Color, Swiss rose. Blooms of extremely large dimensions and perfect quality. Bushes are strong, healthy and insect-resisting. Stems two to three feet long. Recommended most heartily.

Roots \$.75



Honey Dew

HONEY DEW (Greenough, 1935), I. D.

Pink and cream combination of colors. A grand flower. Prolific bloomer, on good stems, 8 to 10 inch bloom.

Plants \$2.50, Roots \$5.00

HONOR BRIGHT (Golden Rule, 1934), F. D.

A well formed large formal decorative of a self color of peach red to light jaspered red; toward the end of season color runs to deep orange.

Plants \$1.00

HORACE ADAMS (Burch, 1933), S. C.

A shaggy semi-cactus with effect of suffused orange with yellow. Strong stems and good bushes.

Roots \$1.00

H. R. S.—HUBERT ROY STOVEL (Seal)

A great informal decorative of true yellow. On Hart's honor roll for 1933, where it was sent for trial. The golden yellow blooms are huge without forcing and are held high above the foliage on long, stiff stems. Mrs. Seal considers H. R. S. the best of her many originations and introductions.

Plants \$1.50, Roots \$3.00

HUNT'S VELVET WONDER, I. D.

Has the distinction of receiving a special award of merit at the New York Show. It is an excellent keeper for so huge a flower. Color is a rich, bright violet burgundy which under some lights looks royal purple. Disease resistant, striking foliage, with excellent stems.

Plants \$3.75

IMPERIAL PINK (Lyndora, 1931), I. D.

A most gorgeous pink with primrose shadings toward center. (H. R.)

Roots \$1.00

INDIANA MOON (Martin, 1932), I. D.

This variety has won many first prizes in the Middle West, where it was originated. It is a good Dahlia in every way and grows without any forcing up around 10 inches and the blooms are held erect on long, stiff stems. The color of this variety is difficult to describe as there are so many colors in its makeup. The Trial Garden describes it as flesh ochre with faint lines of spinal pink running through some of the petals. (H. R.)

Roots \$.75

JANE DEW (Dew-Ruschmohr), I. D.

A magnificent bright pink, that was little short of being called the perfect flower. The blooms are not only large and deep, but are borne in great profusion and are boldly held facing sideways on the best of strong, stiff stems, well out of and above the strong, vigorous growing bush. Plant averages about five feet in height and makes a magnificent sight in the garden, as well as the blooms do on the exhibition table.

Plants \$1.00, Roots \$2.00

JANE ROSS (Ross), I. D.

Another Dahlia in the front rank, where beauty, stem and foliage combined with size are the prime requisites of a great Dahlia. The color is bright purplish crimson shaded violet and overlaid with a velvety maroon sheen, deepening toward the center of the flower. Plants of medium height produce the 10-inch blooms in great profusion from very early until frost, on stems 24-36 inches in length. Jane Ross shows up well under artificial light and keeps unusually well when cut.

Plants \$1.50

JANET SOUTHWICK (Chapman, 1932), I. D.

Bright burgundy red and a color gem of actual beauty. (H. R.)

Plants 75c, Roots \$1.50

JEAN TRIMBEE (Trimbee), S. C.

New large, long petaled, thick flower of Petunia violet. Tall strong grower. Good stems. (H. R.)

Roots \$1.00

JENNY LIND (84), I. D.

A magnificent, big pink flower on tall, clean foliaged plants. The color is a silvery pastel mallow shade but very clear and pleasing. (Ridgway's color chart: La France Pink), Honor Roll, 1931.

Roots \$.75

JEROME KERN (V. & M., 1933), I. D.

A graceful, clean cut beauty. Color shrimp pink with tints of gold and bronze. A great prize winner. (H. R.)

Plants \$1.00

JERSEY'S DAINTY (Waite)

Straight cactus. A lovely and very satisfactory Dahlia, white with a faint over-tone of pink. At times some of the flowers were pure white. The growth is excellent, the stem is fine, and it is a profuse bloomer. Another fine Dahlia from the famous originator who has given us some of the best Dahlias of today.

Plants 75c, Roots \$1.50

JERSEY'S MAJESTIC (Waite, 1933), I. D.

A naturally large growing flower. Color a pleasing blend of salmon, old gold and rose. (H. R.)

Plants \$1.00, Roots \$2.00

JERSEY'S MELODY (Waite, 1932), S. C.

Tyran rose, shading to silver tips, with silver reverse. A very striking variety held on stiff stems. (H. R.)

Roots \$.75

- JESSIE CRAWFORD** (Fraser, 1934), I. D.
Ivory white with blendings of cattleya pink. A large art Dahlia held on the best of stems. (H. R.)
Plants \$2.00
- JOSEPHINE G.** (Grosscross Ruschmohr, 1932), S. C.
True rose pink petals tipped pinard yellow. Unusual bloom formation. (H. R.)
Roots \$.50
- JUANITA MENACHO** (Wm. Shorley), S. C.
A very large flower of deep bluish violet, the darkest in this color we have seen. Plants are strong growers and bloom freely.
Plants \$1.00, Roots \$2.00
- KATHERINE COLE** (McDowell Waite, 1931), F. D.
A combination of beautiful pink, shading to cream, with a pink center. Flowers of extreme beauty are carried high above foliage on a long, leafless stem. Free bloomer. (H. R.)
Roots \$.50
- KATHLEEN NORRIS** (F. & M.), I. D.
The greatest pink Dahlia to date. Color a true rose pink, later deepening to mallow pink, but paler in the young central petals. Tall, strong grower. (H. R.)
Roots \$.75
- KAWEAH** (Menssdorfer, 1932), I. D.
An enormous Dahlia, one of the largest grown—16 in. flowers in 1933 show. It is a rich fuchsia rose with bronze shadings and flushes of mauve on the reverse. (H. R.)
Plants \$1.00
- KAY FRANCIS** (Cordes-Eastman), S. C.
Clear golden yellow without any shadings. It greatly resembles Frau O. Bracht. It was one of the leading prize winners of the past year. The flowers are not large but of clean cut beauty.
Plants Only \$2.50
- KEMP'S BLACK KNIGHT** (Kemp, 1935), I. D.
The nearest we can come to it is dark velvety maroon, almost black. The flowers are of great size, often up to 14 inches in diameter, and are held high above the foliage on thick stiff stems. Plant is a very strong grower, attaining a height of 6 to 7 feet, wide spreading and prolific of bloom, from early season until frost.
Plants \$2.00
- KENO** (Lee, 1935), F. D.
Size of bloom 8 to 9 inches across, 4½ inches deep. Average height of bush 5 feet. Long stems which hold the blooms very erect above the foliage. An entirely new color that is neither pink nor red, but might be called watermelon pink or a Begonia Rose, reverse of petals a lighter shade. A very beautiful Dahlia and one of the very best keepers as a cut flower we have ever grown. Very free blooming.
Plants \$2.00
- KOKOMO SUNBURST** (Kokomo Gardens), I. D.
Glowing orange, radiating to yellow; large flower; perfect stems. Grown in California, leading grower says, "Marvelous"; in Ohio, "Spectacular"; in Canada, "One of the outstanding varieties in the Fall '34 shows."
Plants \$1.25
- KENTUCKY RED** (White's D. G., 1932), I. D.
A large flaming red that does not fade or burn. Very attractive. (H. R.)
Best Strain Plants 60c, Roots \$1.25
- KING OF BLACKS** (Kunzman, 1934), F. D.
A very dark red on good stems. (H. R.)
Plants \$.75
- KEMP'S PURPLE WONDER**—See Purple Wonder.
- LA FIESTA** (Cordes Eastman, 1933), I. D.
A most distinctive Dahlia and prize winner, with petals that curl and twist so the flower looks like a huge chrysanthemum. Color, buttercup yellow, penciled red. Fine strong stem holds flower well above the foliage. (H. R.)
Plants 75c, Roots, \$1.50
- LADY MOYRA PONSONBY** (Elder), I. D.
A Canadian Dahlia. Pure golden yellow, of the very largest size, perfect stems, splendid plant growth, insect-resisting to the highest degree. This flower is absolutely without a trace of coarseness. A flower so chaste, we will just say it is very, very large.
Plants \$1.00

LADY LYNDORA (Hall 83, g e)

Bloom, 9 x 4, bush 3½ feet. This lovely Dahlia has held its popularity, especially in the pink class, as it is a pure pastel pink, with formation, size and stem, to carry it through. Bush growth semi-dwarf, with exceptionally free blooming habits.

Plants \$.60

LAURENE STOCKWELL (Cordes), S. C.

A flower of unusual beauty, a rich pink, with cream center, held erect on strong stems. A strong grower and insect resistant. Flowers up to 10 inches by 6 inches deep, with an always full center. Very attractive formation and a very popular variety.

Plants \$1.50

LAWRENCE TIBBETT (Meussdorfer), F. D.

A grand addition to the Dahlia family, the blooms are not only immense in size, but color, formation, stem and bush growth in its favor. Color a warm glowing clear peach, the petals are broad and evenly spaced, strong cane-like stems well above the heavy thick and leathery, dark green foliage. Won many prizes as it is a grand variety for exhibition purposes. This variety was selected by Lawrence Tibbett, the song bird of radio fame, to bear his name.

Plants \$2.00

LOIS MARION (Detjen-Ruschmohr), I. C.

Center petals citron yellow, outer rows shrimp pink, splashed effect. Straight stems, tall grower. Scored 85 at A. D. S. Trial Grounds, 1932. (H. R.)

Plants \$1.50

LORD OF AUTUMN (Almy, 1934), I. D.

A monster bloom declared by experts as one of the most wonderful yellow Dahlias yet produced. Grows 12 x 9 inches and the long pointed slightly twisted petals recurve until the stem is completely hidden 8 or 9 inches. Held on cane-like stems. (H. R.)

Plants \$2.00

LOUISE BATES (Cordes-Eastman), S. C.

A spectacular flower of the greatest diameter of any yet seen. Grows 8 to 10-inch flowers naturally and up to 14 inches by disbudding. Color mallow pink with phlox purple center. Certificate of Merit at Storrs.

Plants \$1.50, Roots \$3.00

MAN O WAR (Boone-Ruschmohr), I. D.

A fine variety on account of its splendid habits, and one of the best keepers among the large flowering varieties. Color an ox-blood red, with plenty of life, the blooms which are large are held erect and facing sideways on long strong cane-like stems, well out and above the heavy dark green foliage, it is a variety that will bloom with the earliest, and continue right up to frost. A strong robust growing plant that attracted quite a lot of attention at our gardens the past season. Height, five feet.

Plants \$1.50

MASTODON (Stredwick), I. D.

A very large flowering variety from England, with blooms measuring more than 10 inches in diameter. A very free branching variety with the best of stems. Color clear apricot.

Strong Plants \$1.50

MARY BAKER (Wickersham, 1932), I. D.

A gorgeous golden yellow of beautiful formation. The flower is star shaped and of great size. The stem is all that can be desired. This was one of the fine yellows in my garden last season and always large.

Roots \$.50

MARY ELLEN (Loller, 1932), I. D.

Color a violet rose with more pink than lavender. Flowers very large (grown to 12 inches in 1934) and an achievement medal winner. (H. R.)

Plants 60c, Roots \$1.25

MEADOWBROOK (Bryanton, 1932), F. D.

Light mallow purple with edges of mallow pink. Prolific bloomer and can be grown very large. Held on good strong stems. (H. R.)

Roots \$1.00

MELODY (Canadian, New), S. C.

Clear true pink with deeper shadings. Perfect form, erect on splendid stems. Free bloomer.

Roots \$.75

MISS BELGIUM, S. C.

A straight cactus of a fine clear one-toned coral. Good long wiry stems, very fine for basket work.

Plants \$.75

MONMOUTH GENERAL (Kemp, 1933), I. D.

The predominating color of this Dahlia is bright henna, a new color in Dahlias. The flowers average 10-12 inches across and 4 to 5 inches in depth. It is a full petaled flower of great beauty. The long wavy petals darken at the center to a rich terra cotta. A strikingly handsome flower. Plant grows to a height of 4½ to 5 feet, is wide spreading and quite prolific of bloom. Foliage large, tough, and not easily damaged by chewing or sucking insects.

Plants 60c, Roots \$1.25

MONMOUTH QUEEN (Kemp, 1934), F. D.

In this new Dahlia we have a most pleasing color effect, it being picric yellow in the center with a graduation of light primrose to cream yellow. Flowers are full centered, 10 inches and larger and 4 to 5 inches deep, and are held upright on long, stiff stems high above the bright green foliage. Plant is a robust grower and a free bloomer. A mighty fine variety.

Plants \$1.50

MONMOUTH RADIANCE (Kemp, 1934), I. D.

A color combination of light coral pink with primrose suffusion rear half of petals, giving the flower a brilliant coral pink front effect with deep primrose background that radiates throughout the entire flower. It is beautiful from whatever angle it is viewed. It is a true informal decorative and the flowers reach a diameter of 11 inches and over by a depth of 5 to 6 inches, and are held high above the foliage on long stems. Plant is a strong robust grower, many branched; gives best results to allow it to grow at will. Winner of The American Home Achievement Medal at the Camden, N. J., Dahlia Society Show, October 9th, 1933. (H. R.)

Plants \$2.00

MONMOUTH SUNBURST (Kemp, 1934), F. D.

The colors of this beautiful Dahlia are brilliant lemon center with salmon orange background, producing a realistic sunburst effect. The flowers face both upward and front on long stiff stems well above the foliage, and reach a maximum size of about 9 inches wide and 7 inches in depth. The plant attains to a height of 4½ to 5 feet, is many branched, and exceedingly prolific of blooms from early to late season. An Honor Roll Dahlia of much merit.

Plants \$1.00, Roots \$2.00

MRS. BRUCE COLLINS (Groll-Dahliadel, 1935), C.

Bloom 9 x 4, bush 4 ft. A winner at the best undis-seminated Michigan Seedling, also the best undis-seminated Dahlia at the First Mid-West Dahlia Society Show. It is a primrose or light lemon yellow shading lighter toward the tips, but of sufficient depth to show yellow under artificial light. It is a true Cactus, and we have few in this class that grow to the size and perfection of this Dahlia. The low growing bushes are fairly covered with blooms of exhibition size. Fine stems and a continuous bloomer.

Plants \$2.50

MRS. GEORGE LE BOUTILLIER (Smith-Ruschmohr, 1935), I. D.

Is a bright carmine red, shading to a rich cardinal red at the center with full petal and deep flower. The average diameter of this Dahlia is 10 inches although specimens have been grown up to 13½ inches. (H. R.)

Plants \$2.50

MRS. STANLEY R. PERRY (Bissell, 1932), I. D.

The color of this great Dahlia is deep orange at base of petals, chrome yellow with a slight trace of Carmine at tips of petals. Very large and beautiful blossoms on cane-like stems. Insect-resisting foliage and fine form bush of medium height. This Dahlia was very much admired at our Garden, as well as the New York Show.

Plants \$1.50, Roots \$3.00

MURPHY'S MASTERPIECE (Murphy & Reed, 1932), I. D.

Immense dark red that can be grown to 15 inches and a great prize winner. (H. R.)

Plants \$1.00, Roots \$2.00

MY PARTNER (Angell), I. D.

Another of Mr. Angell's that is very fine. The color is white, outer rows of petals shaded with rose pink. This is a very prolific bloomer and a tall grower.

Plants \$1.75

MYRA HOWARD (Glutzbach Dahliadel, 1932), I. D.

The color is a glowing combination of saffron, yellow with tints of salmon, the entire effect being ochraceous orange. Winner of American Home Achievement Medal at New York.

Plants 75c, Roots \$1.50

NANCY CARROLL (Locust Valley Dahlia Farm), S. C.

Named for the celebrated actress and color is same color as Nancy Carroll's hair, a golden copper buff. Grand novelty on long stems and has been grown to 15 inches.

Plants \$.75

NEW GLORY (Troste, 1932), S. C.

One of the most attractive Dahlias in the garden. Oxblood red with tips of white, few flowers come all red. Good stem size and formation.

Plants 50c, Roots \$.75

OLYMPIC SUNSET (Lee, 1935), S. C.

Size of bloom 10 inches across, 4 inches deep. Height of bush, 5 feet. Color is apricot orange and coral with a blending of pale lemon yellow and having a distinct zone of the yellow at the base of petals, reverse of petals rose. A very perfect Semi-cactus. Stems strong and erect. One of the outstanding Honor Roll Dahlias.

Plants \$3.00

OMAR KHAYYAM (Stout), F. D.

This much admired Dahlia is unusual coloring, a Chinese red at the base of petals, shading to bright orange and tipped lighter, making a wonderful color effect. It is a tall healthy grower with strong foliage and incidentally a good root maker. (H. R.)

Roots \$.75

ORANGE MOON (Wallace, 1935), F. D.

This new Dahlia is startlingly beautiful in form and color. The color is a soft buff shading to orange apricot deeper toward the base of petals and reverse shaded orange red. Flower is large, full and deep, facing up and out on long stiff stems that never droop. Bush of medium height. Bug resistant and strong grower.

Strong Plants \$2.50



Oriental Girl

ORIENTAL BEAUTY (Barker, 1931)

Bloom, 7 x 4; bush, 6 ft. This variety has won considerable in the East. The color is a bright rose pink of a slightly deeper tone than Delice. Petals gracefully curl and twist, making in all a very artistic and useful flower. (H. R. 1934).

Plants \$.75

ORIENTAL GIRL (Greenough, 1935), I. D.

A grand large Dahlia of Chinese red and yellow. One of the best in the garden in 1935.

Plants \$2.50, Roots \$5.00

ORIENTAL GLORY (Delight-U Gardens), I. D.

Winner of American Home Achievement Medal at Indiana Show, also Certificate of Merit at Storrs, Conn. Color is candium orange overlaid with scarlet. Center and reverse, heavily shaded scarlet. Fine formation; looks like balls of orange and is a strong grower and good bloomer. Fine stems.

Plants \$1.50, Roots \$3.00

ORIENTAL SPLENDOR (1934), F. D.

One of the finest 1933 introductions we secured. Firm, large rich oriental red with old gold reverse, tips gold. Spectacular and a bloomer of immense flowers borne freely on good stems.

Plants \$1.00, Roots \$2.00

ORINDA (Newberry-Fraser, 1931), F. D.

This Dahlia has the tallest, most vigorous bushes, the longest stems and very large flowers. The color is rosaline purple, one shade darker than Mrs. Ide Ver Warner.

Plants 50c, Roots \$1.00

PALO ALTO (Ballay, 1933), S. C.

One of the sensations of 1933. Salmon in two tones and bright pinkish salmon throughout the flower, but shading quite perceptibly to a sort of salmon gold at the center. It is a perfect Dahlia and grows 10 to 12 inches by 6 inches deep; good bloomer and held high on long stiff stems. One of the highest scoring Dahlias on the H. R.

Plants \$1.00, Roots \$2.00

PASTEL GLOW (Artland-Ruschmohr), I. D.

A magnificent Dahlia that is a garden in itself, and one of the most attractive Dahlias I know of. The flowers are massive in size, and of great depth, color a pure pastel pink, the petals are exceptionally long and very broad, and seem to be of a wax-like texture, a color that fairly dazzles in the sunlight or under artificial light. They are held at a forty-five degree angle, on strong stems, with heavy, light green foliage, and borne in great profusion. They are so abundant that at times the foliage is completely hidden with the blooms; the bush is a strong, robust grower, averaging about four feet, one that should be in every garden.

Plants \$1.00, Roots \$2.00

PAUL PFITZER (Berger)

Bloom 8 x 4 inches, bush 4 feet. A German novelty that won a name for itself in the New York Show. It is a pleasing combination of primrose and shell pink that blends wonderfully well with Frau O. Bracht. Strong, vigorous plants with dark foliage and excellent stems.

Plants \$.75

PEACHES (Greenough, 1935), I. D.

Peach pink. Wonderful cut flower of Jersey Beauty type. Good long stems. Fine for basket work.

Plants \$2.50, Roots \$5.00

PENN CHARTER (Hall, 1932), F. D.

Bloom, 10 x 5 inches. A strong grower. Blooms have great depth and beauty. (H. R.)

Roots \$.50

PINK CLOUD (Cavannah, 1935), I. D.

Light shell pink. Very beautiful bloom, large size, much admired at Boston Show, 1935. Also at Storrs, where it scored 83.

Plants \$2.50

PINK LADY (Cavannah), I. D.

Fine pink Informal. Should be in every garden. Good large blooms.

Plants \$2.50

POT OF GOLD (Chappaqua), I. D.

A large brilliant flower of clear yellow with long wavy petals, free blooming. A Certificate of Merit Dahlia. Very fine.

Roots \$1.00

PRIDE OF WISCONSIN

A large Dahlia of American beauty shade. Petals long and pointed. Flowers held on long stiff stems.

Plants \$.75

PRES. FRANKLIN D. ROOSEVELT (Andrews), F. D.

A massive deep flower that is very striking in the garden. Color bright garmine red, reverse of petal is cream. The flowers are held facing sideways on strong cane-like stems, high and above the large heavy insect-resistant foliage, a very strong rugged grower and a free and prolific bloomer.

Plants \$1.00, Roots \$2.00

PRINCE OF PERSIA (Newson, 1932), I. D.

A very striking bright red exhibition Dahlia of the most iridescent rich-glowing crimson. The petals are of great depth and substance, making an unusually deep, attractive flower. Bush is vigorous, robust and very tall. This Dahlia attracted more visitors' attention than any other in my garden in 1933. (H. R.)

Roots \$.75

PRINCETONIAN (Colvin), I. D.

A massive deep flower, color a blend of light orange yellow and coral pink, the petals are very long and broad at the base and taper to a point, with a very high center; they twist and curl in a most enchanting manner, a real beauty. The flowers are held at a forty-five degree angle on very strong, cane-like stems, well out of and high above the tall bush with exceptionally large heavy insect-resistant foliage. Height, six to seven feet.

Plants \$1.50, Roots \$3.00

PURPLE WONDER (Kemp, 1933), I. D.

The predominating color of this fine Dahlia is pansy purple, with rose hued lavender reverse. The blooms range up to 11 inches across and 6 inches in depth. Are full centered, and are held facing well above the dark foliage on stiff stems. Foliage very thick, dark colored, and so tough in texture, insects make but little headway in damaging it.

Plants \$1.25, Roots \$2.50

R. A. BROOMFIELD (Petrie-Chappaqua), I. D.

A Dahlia of great beauty and vigor, color a glorious saffron orange, flushed with rose. The flowers are large and of wonderful formation, with great substance and keeping qualities, and are held facing sideways on strong stiff stems, well above the vigorous growing bush, with dark green insect-resistant foliage. The plant is a fine clean grower and makes a shapely bush about five feet high and is always loaded with flowers from early until frost. No collection is complete without it.

Plants \$1.50, Roots \$3.50

RAINBOW'S END, I. D.

A new introduction by our good friend Walter Bissell. The coloring of this Dahlia is all that the name indicates—the petals are scarlet with empire yellow tips and maize yellow reverse—a most unusual and beautiful combination. The flowering habits are good and the plant is strong, healthy and insect-resisting. Scored 82 at Storrs in 1932 and has won first honors wherever exhibited. We recommend Rainbow's End from every standpoint.

Plants \$1.00, Roots \$2.00

RAJAH (1935), I. D.

Color yellow bronze splashed bronze red, large flowers on top of long rigid stems atop a 4½ to 5 foot bush, flowers stand out very well.

Plants 60c, Roots \$1.25

RED STAR (Cactus)

Bright red blooms with long wavy petals. A good grower with robust foliage and fine stems. One of the best of its type.

Plants 75c, Roots \$1.50

ROBERT EMMETT (Moroney Dahliadel, 1933), I. D.

Scored 87 at Storrs; flower 9 x 4. A grand new velvety cardinal red Dahlia of giant size and beauty. Good open grower with dark green insect-resistant foliage and held on long stiff stems. One of the finest in the garden. (H. R.)

Plants \$1.25, Roots \$2.50

ROCKLEY MOON (Ruschmohr), F. D.

Another impressive formal decorative which made the round of the shows this past season with startling success, and an outstanding variety at Storrs, where it received a Certificate of Merit. A large flower of exceedingly bright yellow, with bronze tints at the center. Stems are like canes, foliage is good and bush tall.

Plants \$1.25, Roots \$2.50

ROSIANNA MEHEFFEY (1932), I. D.

A beautiful new tyran pink that all admire. Grows large 9-10 inch without disbudding or pruning. Fine strong stems hold the flower erect.

Plants 75c, Roots \$1.50

ROTHSCHILD (New), I. D.

A fine new variegated Dahlia; petals with bands of red and white stripes. 5 inch flower; good stems and attractive.

Roots \$1.00

RUBY TAYLOR (Garrity, 1932), I. D.

The habits of this Dahlia are nearly perfect. It is an open growing bush and needs no pruning to produce large deep flowers. Clear self color of carmine shade. Awarded a Certificate of Merit at Storrs in 1932. Winner of no less than six first prizes on the Pacific Coast. One of the finest in my garden in 1934.

Plants 75c, Roots \$1.50

RUDY VALLEE (Broomall Success, 1931), S. C.

One of the most beautiful large Dahlias ever offered. When the flowers begin to open they show chrome yellow at center, with a graduation of grenadine red as the flower expands, finally becoming solid grenadine orange red when in full bloom. Flowers, large, full centered, and are held well above the celan-cut foliage on long straight stems. Scored 86 at Storrs.

Plants \$.60

RUTH M. (Greenough, 1934), F. D.

A grand golden buff with tinge of white about one-third the way down. Sometimes throws a solid colored flower or two on a bush. Flowers always perfect, held up well on good stems and very attractive. I had flowers up to 10 inches without disbudding.

Plants \$1.25, Roots \$2.50

SALLY B. (Almy, 1933), I. D.

One of the most beautiful pinks I grew last year and there are many new ones. Seedling of Kathleen Norris and has the same long black stiff stems. Stands facing you. Won 1st prize in 1934 at Salem, Ore., as largest and most perfect flower.

Plants \$1.25, Roots \$2.50

SATAN (Ballay-Success, 1933), S. C.

Flaming red with a touch of gold at the centers. This big bold flower is held high on cane-like long leafless stems and the horn-like petals are perfectly rolled and incurved, giving it an unusual brilliance that is very fascinating. Strong, vigorous grower; very large and Gold Medal winner. (H. R.)

Plants 75c, Roots \$1.50

SHAHRAZADE (Newsome, 1932), I. D.

Another remarkable shade of bright pink similar to but deeper than the old "Delice." The form and size resemble Jane Cowl and the bushes are also vigorous. (H. R.)

Plants 50c, Roots \$1.00

SHALIMAR (Burkart), F. D.

On the Midwest Honor Roll for this year. Color is poinsettia red; in other words, red that is red. A huge flower on a good stem; free bloomer. A good prize winner.

Plants \$2.00, Roots \$4.00

SNOW CAP (Frasier, 1931), F. D.

Very perfect petaled, snow white, of good size. Fine grower and good stems.

Roots \$.75

SONNY BOY (Salem D. & G., 1933), I. D.

A giant old rose, slightly striped and tinged old gold, that grows good even in the field. Flowers 11 x 8 in. on 4 ft. bushes. A hardy grower and insecta resistant.

Plants \$1.00, Roots \$2.00

STAR OF BETHLEHEM (Darling, 1931), S. C.

A star-like bloom of pure waxy white. Good size, good long stiff stems. (H. R.)

Plants 60c, Roots \$1.00

STRONGHEART (Ballay), I. D.

Very large pure gold, not a dead gold, on fine stems, made this Dahlia a good seller.

Plants 75c, Roots \$1.50

SULTAN OF HILLCREST (Scott, 1933), F. D.

Bloom 7½ x 5, bush 5 ft. The unique form with the petals recurving to the stem attracts one's attention. Huge blooms of lemon yellow with reverse of rosy pink on fine stems, giving an unusual color effect. A Dahlia we can highly recommend. Certified at Storrs.

Plants \$2.00, Roots \$4.00

TACOMA'S BEAUTY (Lea, 1933), F. D.

Deep salmon pink blended with strawberry pink. Large and with the best of stems. Has won many prizes.

Plants 75c, Roots \$1.50

TERCENTENARY (Heaphy, 1933), I. D.

One of the finest yellows on the market. Long crinkly petals rolled to the tips. Perfect blooms; are large and thick. A flower every one will enjoy.

Plants \$1.00, Roots \$2.00

THE COMMODORE (Scott Kemp, 1932), I. D.

Very large bright lemon yellow and prolific. Can easily be grown 12 inches or more. Not a tall grower, 4 to 5 feet, but strong plants. (H. R.)

Roots \$.50

THE FIREMAN (Success, 1934), I. D.

Spectrum red, dazzling, with occasional stripes and tips of mustard yellow. Winner of American Home Achievement Medal. (H. D.)

Plants \$1.50, Roots \$3.00

THOS. A. EDISON (Dahliadel, 1931), F. D.

A wonderful Dahlia of stag horn petalled formation and a gorgeous royal purple color. Very attractive and good bloomer; fine stiff stems.

Roots \$.75

TOKIO (Kokomo, 1932)

The color is lemon yellow with many petals tipped jasper red and phlox purple. A prolific bloomer held on good stems.

Plants \$.75

TOWERS EMPIRE (Tower-Parrella), I. D.

Here is one Dahlia that should be grown in every garden, and one that we can very highly recommend. This variety was grown at the N. Y. Botanical Gardens and was greatly admired, and will be found way up among the leaders in the popularity contest, as it has many features with it. The flowers, which are large are of a clear gold in color, with amber shadings in the center, and are of good size and held at a forty-five degree angle on exceptionally long, strong, stiff, rigid stems, high up and well out of the foliage of the tall growing bush, the foliage is very odd, being thick and of a fern-like pattern, is an early and very prolific bloomer, and have counted as many as 20 blooms on the plant at the one time. A good, strong, vigorous grower, height about seven to eight feet.

Plants \$5.00

TUNNEL ANVERSOIS, I. D.

A beautiful European introduction. The flowers are borne on long straight stems on top of a strong growing bush. Color crimson violet with the ends of the petals tipped white. A Dahlia that you will be proud of and enjoy growing.

Plants \$1.50

TWILIGHT (Strait), I. D.

Here, we would say, is a decidedly improved Will Rogers. A very rank grower, with fine foliage and stems. Color a pinkish lavender with some white shadings.

Plants \$.75

VERNON'S RED (Vernon, 1934), I. D.

A grand, deep velvety maroon. Large and deep attractive flower.

Plants \$1.50, Roots \$3.00

WASHINGTON GIANT (Lee, 1934), I. D.

Here is a real lavender in a finely formed flower. The blooms are streaked with silver, showing silver petaloids in the center. Very large on extra good stems. On the Honor Roll.

Plants \$1.50

WATCHUNG SUNSET (Smith), I. D.

Very pretty flowers of a watermelon pink with gold shadings. Excellent bloomer and fine stems.

Plants \$.60

WENOKA (Hulin, 1935), F. D.

Color a rosy mauve and flowers of large size, up to 13 inches in 1934. One of the finest stemmed ones I ever have seen. Never defeated in the Northwest and a sensation at the Trial Gardens.

Plants \$5.00, Roots \$10.00

W. H. T. (McCarroll, 1931), F. D.

Rich old rose on begonia rose with shades on the reverse of petals. It is a tall, robust grower, producing big flowers on strong stems.

Roots \$.50

WHITE GOLD (Blamer, 1932), F. D.

A beautiful flower in white shading to primrose yellow at the base of the petals, reverse white, veined yellow. An extra prolific bloomer. (H. R.)

Roots \$1.00

W. H. Hogan, F. D.

Bi-color Dahlia, odd shade of red, striped white.

Roots \$.75

WHITE WONDER (Kemp, 1933), I. D.

The largest fluffy white to date. Long graceful wavy petals and easily grown from 10 inches up. Strong plants and long stiff stems. (H. R.)

Roots \$1.00

WILL ROGERS (Eastman), F. D.

A beautiful blending of lavender and white that attracts attention at once. Flowers large, held well above foliage on good stems.

Plants 60c, Roots \$1.25

YANKEE GOLD (Wood, 1935), I. D.

"The best large gold Dahlia in my garden in 1935," one good grower said, and very outstanding.

Plants \$2.50

ZION'S DELIGHT

Achievement Medal winner. The new Dahlia in 1935. A many petaled, rich red informal decorative. Long stiff stems never pendant. Wonderful substance.

Plants \$2.50

ZION'S PRIDE (Gresh 85, 1934), I. D.

Bloom 10 x 5, bush 5 1/2 feet. Another good yellow which is out of the ordinary in form as the petals are quite broad and heavy. It qualifies well in size, stem, foliage, and substance. Won the A. D. S. Gold Medal and American Home Achievement Medal at the World's Fair Dahlia Show, 1933, and should become a great favorite.

Plants \$2.50

Standard Varieties and Many Large Flowering Varieties, Including Older Introductions from Honor Roll

ROOTS

ALEX WALDIE, I. D.

Soft cream with pink shadings.

\$0.25

AZTEC GLORY (Broomall), I. D. (R.)

Extra fine lemon yellow—large and thick. Grew 11 1/2 inch by 5 inches in 1933.

\$1.00

BARBARA REDFERN (Redfern) (R.), D.

Blend of old rose and gold.

\$0.50

BASHFUL GIANT, T. D.

Fine exhibition flower. Very large apricot, shaded gold.

\$0.25

BONNIE BLUE (Ball)

A nearly blue color, a perfect ball Dahlia.

\$0.25

CAMILLE FRANCHON (Peo)

Aline red to rich garnet center, large yellow disk in center.

\$0.25

CARUSO

Beautiful pink, yellow and salmon blended together, large heavy unique flower.

\$0.25

CASPER G. WARE, F. D.

Bright silvery violet rose, nearly pink, late in season.

\$0.50

CHAMPAGNE, F. D.

Dull golden bronze or champagne.

\$0.25

CHEMAR'S MASTERPIECE, S. C.

Incurved cactus flower of orchid pink or soft orchid color. The flowers are extra large, of perfect form, having the right tilt on extra long stems to show their beauty.

\$0.75

CHEMAR'S U. S. A., F. D.

The blooms of this Dahlia are very deep and large with an airtight center on long, stiff stems holding the flowers erect. Color is apricot, buff, suffused gold. Good for all purposes.

\$0.50

CITY OF SAN DIEGO (Peo)

Rosy purple; some flowers purple and white.

\$0.25

CITY OF TRENTON (Prentice), I. D.

Tangerine reverse strawberry red. Very large, held on long stiff stems. (H. R.)

\$0.50

CONQUISTADOR, I. D.

Soft yellow, shading to a glowing pink at base of petals. Pink color is very pronounced.

\$0.75

COURONNE O'OR, I. D.

Rich golden apricot color with the reverse of the petals rosy carmine.

\$0.25

DAD (Petner), D.

Spectrum red. One of the best. Score 84.

\$0.50

EDNA FERBER (F. & M.), I. D.

Glistening coral shading to old gold.

\$0.75

DR. JOHN H. CARMAN (Dixon), F. D.

Tyrian rose, tipped petunia and silver. Always large and fine.

\$0.50

EDISON'S WHITE, I. D.

Glistening white with pale lemon shadings from half way up petals to the center. Long waxy petals.

\$0.25

ELEANOR HERRICK (Peo)

Light maroon, large with good stems, thick flower, one of the finest.

\$0.40

ELITE GLORY (Kennedy), F. S.

Giant rich red without other shadings. Holds good when cut. I have the finest strain, flowers face you.

\$0.50

ELIZA CLARK BULL (Boston), F. S.

One of the finest pure white decoratives, large and held on long stiff stems.

\$0.75

ELLINOR VANDERVEER (Seal), F. S.

The large blossoms are of a glowing, satiny, rose-pink.

\$0.25

EMMA MARIE (Maytrott), I. D.

In color this is a beautiful clear bright pink with a white center.

\$0.25

FRAU ANGELO, F. D.

Very fine flower of bright lavender pink. Long wiry stems, good cut flower.

\$0.25

FRANCESCA (Carbine), I. D.

A giant. Old rose to dull tanned rose with distinct violet suffusion. Excellent cut flower.

\$0.75

FRANK MILLER (Burch)

Fine new yellow Dahlia of large size on long strong, erect stems. Very showy.

\$0.50

F. T. D. (F. & M.), F. D.

Color Tyrian rose, free bloomer.

\$0.35

FURNITURE CITY (Edison), S. C.	
Clear deep lavender shade with bluish cast on outer ends of petals.	
	\$0.35
GEO. W. GERO (Ball)	
Clear rose pink, a new hybrid.	
	\$0.25
GRACE (Bibbs, 86), F. D.	
Blooms 6 x 2½, bush 6 feet. This Dahlia will remind you a lot of Jerseys' Beauty in form, not quite as deep a flower, but will give you twice as many blooms. Stems long and stiff, but not clumsy. Color, pure white tipped and suffused lavender. As a cut flower it is very profitable.	
	\$0.50
GRIFFIN (Kemp), F. D.	
Color, pinnard yellow with a pale virgin yellow on reverse, tinted lavender pink.	
	\$0.50
HARRY MAYER (Seltsan), R. D.	
Pale rosaline purple. Large and fine.	
	\$0.35
HARRY SHELDON, JR. (Murphy), I. D.	
White center with outer row of petals a beautiful shell pink.	
	\$0.35
HIS MAJESTY (Boston), I. D.	
Bright scarlet, formation of petals slightly irregular. Good grower.	
	\$0.40
HOFFNUNG, I. D.	
Color, satiny old rose, illuminated by a golden suffusion.	
	\$0.25
JANE COWL (Downs), I. D.	
An immense flower of buff; produced on long stiff stems—won several medals.	
	\$0.50
JERSEY'S BEACON (Waite), F. D.	
Chinese scarlet, with a paler reverse, giving it a two-toned effect.	
	\$0.35
JERSEY'S BEAUTY (Waite), F. D.	
Large true pink and old gold, blending with salmon.	
	\$0.35
JERSEY'S RADIANT (Waite), I. C.	
Bitter sweet orange. Free bloomer.	
	\$0.35
JUNIOR, I. D.	
Color soft delicate shade of lavender pink.	
	\$0.25
KEMP'S VIOLET-WONDER, F. D.	
The best violet colored Dahlia to date. Flower is perfect, attaining great size and depth.	
	\$0.75
KENTUCKY (Wigginton), Dec.	
A wonderful new shade of creamy pink. Long stems, excellent cut flower, good keeper.	
	\$0.35
LADY ELIZABETH, S. C.	
Light yellow, overlaid bronzy rose.	
	\$0.40
LADY OF HONOR (Peo)	
Color apricot shaded to fawn pink.	
	\$0.35
LA GROS BETE, F. D.	
Large grand rosy red; one of the finest of its color and with good stems.	
	\$0.50
MARDI GRAS (Diggle), F. D.	
Perfect flower of deep burgundy. Good stems. Tall grower; large size.	
	\$0.75
MARIAN BROOMALL	
Pink and white. A beautiful flower held upright on good stems. Very showy.	
	\$1.00

- MARMION (Mastic), F. D.**
Pure, golden yellow with bronze suffusion on reverse of petals; very large thick flower. Strong plants and stems; very attractive flower.
\$0.50
- MAUDE JOHNSON, F. D.**
Pinkish violet, shading to white, flushed lavender.
\$0.50
- MAY TROWER (Seal), I. D.**
A deep artistic flower ranging in color from palest gold to deep golden apricot.
\$0.50
- MONMOUTH CHAMPION (Kemp), F. D.**
A great favorite bearing many blooms of brilliant orange name. (H. R.)
\$0.50
- MONMOUTH GIANT (Kemp), F. D.**
This giant Dahlia is a clear sparkling orchid color of unusual beauty and refinement.
\$0.75
- MR. CROWLEY, F. D.**
Bright flowering shade of salmon pink, tipped creamy yellow.
\$0.25
- MRS. CARL SALBACH, F. D.**
Giant rose pink decorative with light base, long stiff stems, and excellent flower.
\$0.25
- MRS. C. D. ANDERSON (Show)**
A new New Jersey Dahlia far above the average show type. Stems long and wiry. Flowers large and almost round in form. Color, rich clear purple. An early and very prolific bloomer.
\$0.35
- MRS. F. E. BULLARD, F. D.**
Beautiful light pink; flowers immense size held on strong stems.
\$0.60
- MRS. IDE VER WARNER (Marcean), F. D.**
Deep mauve pink, one of the finest.
\$0.25
- MYRTA GARRISON (Edison), F. D.**
Extra fine buff to apricot yellow, shaded darker at center.
\$0.25
- NANAQUAKET (Richards), F. S.**
Most beautiful shade of delicate orchid pink, each petal bordered with a hair line of deeper orchid color. Extra fine past season.
\$0.50
- NANCY HELEN, F. D.**
Fine delicate shrimp pink flower on good stiff stems.
\$0.25
- OLD HICKORY (Dahliadel), F. D.**
Madder red with apricot suffusion. Rugged plants, 3½ feet high; good bloomer.
\$0.75
- PAPILLON, I. D.**
A beautiful shade of old rose, with golden lights.
\$0.75
- PEPPERMINT CANDY, S. C.**
Long creamy white petals with many stripes and splashes of crimson. Good size and very unusual.
\$0.50
- PRIDE OF FT. MORGAN (Plafger), F. D.**
A wonderful giant red decorative Dahlia with good depth. It is one of the most attractive and perfect reds I have ever seen, and grows about 9 inches without disbudding. Held erect on good stiff stems.
\$0.75
- PRIDE OF SPRINGHILL (Edison), F. D.**
One of the finest rose reds, center petals cream splashed, thick flower full to the center.
\$0.50
- PRIDE OF STRATFORD (Meacham), F. D.**
A giant, orange yellow with base of shading to reddish bronze reverse.
\$0.50

	ROOTS
RADIO (Sampson), F. D. A bi-color blood red, tipped yellow, very large, attractive and brilliant flower.	\$0.50
RAMONA ROSE, F. D. A Dahlia of medium size of beautiful rose red.	\$0.25
REGAL (Boston), F. D. A combination of autumn shades of bronze heavily suffused with old rose and shading to gold at base.	\$0.50
RICHELIEU (Redfern), F. D. A large deep velvety red or phlox purple. Free bloomer.	\$0.35
ROMANCE, I. D. Soft pink to fawn color splashed carmine, center orange color.	\$0.25
ROSE FALLON (Harding), F. D. Very fine flower of pleasing shades of amber, russet and salmon.	\$0.50
ROSE GEM, I. D. A variety imported from Holland. A pleasing shade of red.	\$0.25
ROSE GLORY, I. D. Large beautiful old rose shaded flower. Fine stems and bush.	\$0.50
ROYCROFT A clear warm buff color. Flowers are produced in great abundance on dwarf bushes.	\$0.50
SAGAMORE (Badetty Bros.), F. D. Fine golden yellow.	\$0.35
SALBACH WHITE (Salbach), F. D. A superb waxy white Dahlia on a perfect stem.	\$0.50
SANHICAN BEAUTY (F. & M.) Decorative. An unusual color, being a soft pinkish orange, are medium in size and very freely produced on excellent stems.	\$0.50
SANHICAN'S MONARCH (F. & M.), I. D. Decorative. Rich tyrian rose centers; tips lighter. Splendid stems and foliage.	\$0.50
SANHICAN'S QUEEN (F. & M.), F. D. It is a beautiful apricot with blending of carmine rose.	\$0.50
SANTA ANNA (Pelicano), I. D. One of the largest and best of this shade. A beautiful salmon-rose suffused with old gold. Very attractive.	\$0.60
SILVER KING, F. D. A most beautiful lavender pink shaded and flushed with white.	\$0.35
SPOTSWOOD BEAUTY (Rigler), F. D. One of the most beautiful and one of the best. The color is a clear chatenay pink with a slight shading of lemon yellow at base of petals. Tall strong grower.	\$1.00
SPRINGHILL FLAME (Edison), I. D. Extra bright rose red to almost scarlet, shaded with bronze.	\$0.25
SPRINGHILL GLOW, R. C. One of the finest sulphur yellows, tipped brown when first opening.	\$0.25
SPRINGHILL VELVET (Edison), I. D. Dark marion with velvety purple cast to the tip of center petals. Prolific bloomer.	\$0.25

THE BAY STATE (Marshall), I. D. Cream and pink, a large light flower.	\$0.35
THE EMPEROR (Marean), F. D. A maroon Dahlia of the finest type, borne on long stiff stems.	\$0.35
THE LEMONADE (Ward), I. D. Should be in every collection; of large size and a beautiful clear lemon yellow color. Full centered flowers are very large and borne on long stiff stems held high above the foliage.	\$0.75
THE TELEGRAM (Marshall), I. D. Tan to orange, tipped white; very striking. Large flowers held on good stems and a vigorous grower, 5 to 6 feet high.	\$0.50
THE WORLD (Dahliadal), F. D. The color of this variety is a deep rosy magenta overlaid garnet and with silver shadings on the edges of the petals. The stems are perfect.	\$0.50
THEODORE VAIL, F. D. Fine old gold, shading to apricot, long stems.	\$0.35
TOMMY ATKINS, F. D. Glowing scarlet red with long stems; a large flower.	\$0.50
VALENTINO (Boston), F. D. Flower of size, beauty and attractive formation. It is a true salmon pink, shading to cream at center, and is held erect on long upright stems.	\$0.50
VIVANDIERE (Peo) Immense size and great depth, color a lively cherry carmine shading lighter toward the tips. Very attractive.	\$0.35
WATCHUNG SUNRISE (Smith), F. D. Color golden amber with reverse on the petals showing rose pink and each petal edged rose pink.	\$1.00
WORLD'S BEST WHITE, F. D. Large pure white of the best size and form, fine for exhibition.	\$0.75
XAVIER, I. D. Cream color with bronze and peach pink.	\$0.25
YANKEE KING (Woods), I. D. Cornelian red, reverse lightly shaded mallow purple. Very vigorous, tall, and blossoms keep well when cut.	\$0.50
YELLOW BEAUTY (Wood), F. D. Empire yellow of same formation as Jersey Beauty. Good stems.	\$1.00
YELLOW PRINCESS (Frazer), Dec. One of the good yellows. Many prizes and medals won as largest bloom.	\$0.75

SEE OUR BARGAIN COLLECTIONS

POM POMS

The Finest Flowers for Cutting or Table Boquets. Will keep from three to five days

We grew over 2,000 clumps of Pom Poms last year and over fifty varieties.

ROOTS

ACE OF DIAMONDS A fine bright red.	\$0.50
ARTHUR KERLEY Rich cherry red.	\$0.50

ACHILLES	Flesh color to lavender, tipped pink.	
		\$0.25
AIMEE	A small bronze flower with good stems.	
		\$0.25
AMBER QUEEN	Beautiful shade of amber.	
		\$0.25
BIT O' LILAC	Good flower of soft lavender lilac.	
		\$0.25
BRONZE BEAUTY	Lovely shade of amber, fine for cutting.	
		\$0.25
CARDINAL	Fine bright cardinal red.	
		\$0.35
CHALLENGE	A good red and white.	
		\$0.25
DARKEST OF ALL	Black maroon, fine and good grower.	
		\$0.35
DEW DROP	Light pink, edged darker.	
		\$0.25
DOUGLAS TUCKER	Golden yellow with crimson center.	
		\$0.40
EFFECT	Glowing red with fine long stems.	
		\$0.35
ELIZABETH	Fine golden yellow edged red.	
		\$0.25
ELFINE	Fine light creamy yellow.	
		\$0.25
FASHION	Deep amber shade, fine for cutting.	
		\$0.30
FRAU DE KNOBE	Round, good white tipped purple.	
		\$0.35
GANYMEDE	A beautiful shade of fawn.	
		\$0.25
GIRLIE	A pinkish mauve color.	
		\$0.35
GOLDEN GEM	A neat deep golden yellow.	
		\$0.30
GOLDEN QUEEN	Deep golden yellow, a little large but long stemmed and makes it the finest for basket work or bouquets.	
		\$0.40
GRAUS AUS WEIN (Cannell)	Amber shaded cerise. Crushed strawberry.	
		\$0.25
HARRY SNOOK	Not especially new but scarce. Fine for cutting, long stems, clear rosy pink.	
		\$0.50
HONEY	Light honey yellow with faint suffusion of red on edge of petals. Long stems (new).	
		\$0.50
IMPROVED LITTLE BEAUTY	White ground tipped lavender pink; good stems, and good cut flower.	
		\$0.25
JESSICA	A combination of amber and salmon tinted red. Very showy, blooms profusely and continually.	
		\$0.25

JOE FETTE	Perfect pure white; stems good; free bloomer.	\$0.35
JOHNNIE	The most perfect dark maroon if all. Very fine for exhibition.	\$0.50
KITTY C.	Fine gold edged red, good stems, strong bushy plants.	\$0.25
LEADER	Lemon, tipped purple, free bloomer.	\$0.35
LITTLE BEESWING	Small yellow ,tipped deep cherry.	\$0.50
LITTLE DAVID	Fine russet orange, good stems.	\$0.40
LITTLE EDITH	Yellow tipped scarlet. A perfect exhibition variety.	\$0.25
LITTLE JENNIE	A clear peach blossom pink color. Excellent for cutting.	\$0.25
MARY MUNN	A fine pure lavender.	\$0.35
PHYLLIS	Deep yellow edged and shaded rose red.	\$0.35
POTHART	Best of brightest dark reds, fine form and very showy. Long stems.	\$0.40
PRIDE	A good dark red.	\$0.25
PRINCE CHARMING	Lavender heavy tipped with purple.	\$0.25
RAPHAEL	A long stemmed dark red to maroon.	\$0.25
ROSA WILMOUTH	Fine rosy pink; fine for cutting.	\$0.35
SILVERTIP	Small purple with center and reverse silver gray.	\$0.50
SNOWCLAD	A pure white ball.	\$0.25
SPY	Orange scarlet. A very fine one.	\$0.35
TAKA'S PURPLE	Very small cerise purple on the finest clean stems.	\$0.25
SUNSET	Good gold color, fine flower and stems.	\$0.35
TOM THUMB	Small bright red.	\$0.25
VIVID	A very fine bright red with good stems.	\$0.35
YELLOW GEM	The finest deep yellow; good stems and best for cutting.	\$0.25

Collections Pom Poms

	ROOTS
5 varieties listed at 25c, your choice.....	\$1.00
8 varieties listed at 25c, your choice.....	1.50
12 varieties listed at 25c or '35c, your choice.....	2.50
12 good varieties; we have a large surplus of our selection	1.50

MINIATURE DAHLIAS

BABY ROYAL (Min. S. C.) (New)

The Gold Medal miniature from England. It won for us first award in every class in which it was entered. It is a most delightful and dainty little flower of salmon pink and apricot with gold shadings. Flowers roll and incurve, making a graceful blossom on long wiry stems. The low-growing plants are always a mass of bloom.

Roots \$0.50

BISHOP OF LLANDAFF

A wonderful English bedding Dahlia. Intense red with dark bronze lacy foliage that contrasts beautifully with the flower.

Roots \$0.60

ELIZABETH PAPE (C.)

Small pale pink and white cactu on dwarf bush.

Roots \$0.35

FAIRY (Bond)

The formation and color the same as the famous Jersey Beauty. Pink.

Roots \$0.60

GAIETY, F. D.

As its name denotes, very gay, colored rich crimson; each petal tipped white.

Plants \$0.50

IRENE, F. D.

Fine old rose to coral pink; a perfect small exhibition flower held on long stems.

Roots \$0.50

LITTLE JEWEL (Deco.)

One of the finest small light pink Dahlias.

Roots \$0.35

LITTLE NEMO (Chase)

A red tipped white that was a winner at the Midwest Show.

Plants \$0.50

RED HEAD (Peck, 88), F. D.

Bloom, 2 x 1½, bush 3 feet. A Dahlia which is pleasing in appearance and a fine keeper. Color, scarlet orange, with blooms facing up on nice stems.

Plants \$0.50, Roots \$0.75

Mignon or English Bedding Dahlias

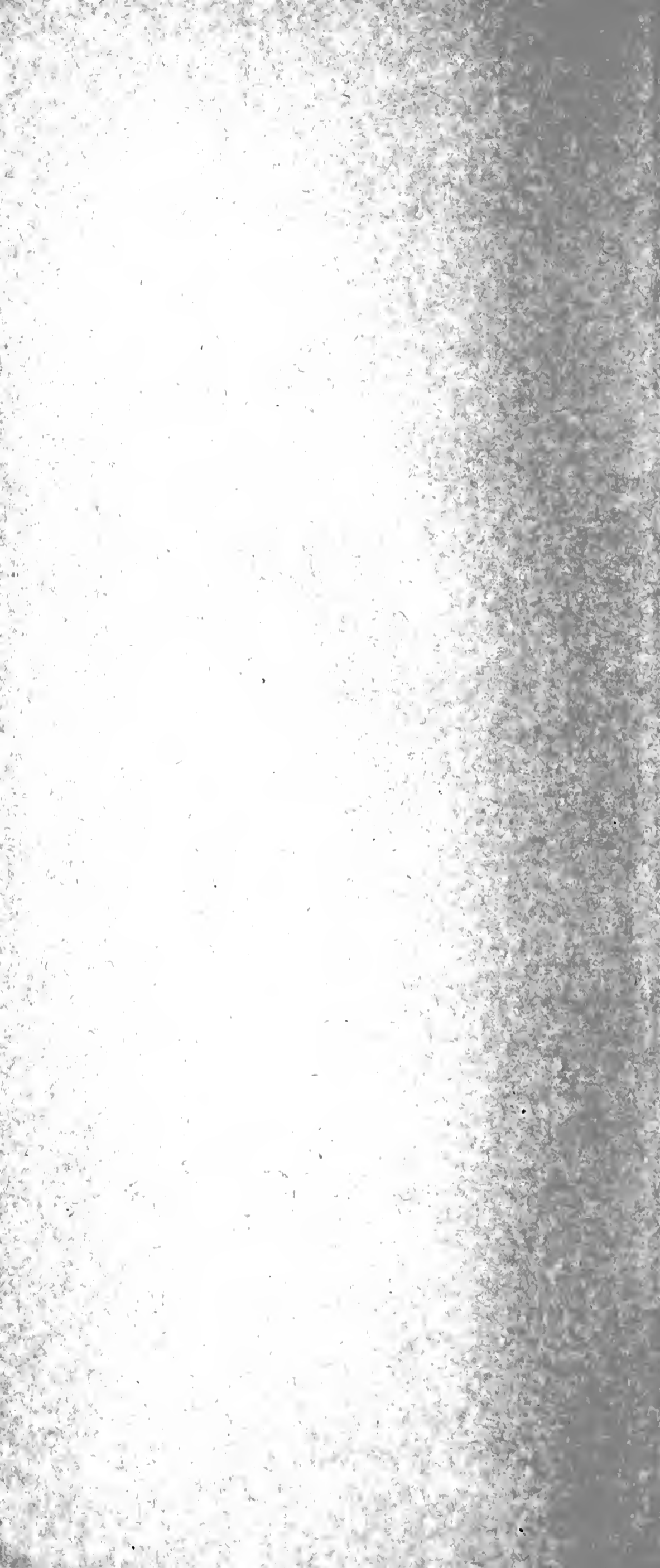
These lovely long stemmed single flowers make the finest kind of borders and are extra fine for table decorations where small flowers are required. They come in many colors and I have mixed mine. Can be set 12 inches apart and never get over two feet high. Mixed color only.

Ten for \$1.15

EXHIBITION PLANT COLLECTION

America's Sweetheart	California Rose
Adirandac Sunset	Frank Serpa
Adirondack Sunset	Hunt's Velvet Wonder
Col. Lewis	Tower's Empire
Cornelia Bryce Pinchot	Wenoka

Nine Plants, \$33.00 Book Value, for \$16.00



BUY BARGAIN ROOT COLLECTIONS

Save from 25% to 50%

Beginners' Root Collection 10 for \$1.00

10 good varieties, all labeled sure to grow and good size from our surplus 25c to 50c varieties.

Beginners' Root Coll. A No. 2 20 Roots all labeled \$2.00

This collection includes Roots listed from 25c to 50c from our surplus varieties.

Root Coll. A 3 8 Roots, Book Value \$3.00, for \$1.75

Harry Mayer
Jersey Radiant
Springhill Glow
Springhill Velvet
The Bay State
Theo. Vail
Vivandiere
The Commodore

Root Coll. A 4 8 Roots, Book Value \$4.00, for \$2.00

Jane Cowl
Nanaquacket
Pride of Springhill
Pride of Stratford
Rose Fallon
Sanhican Monarch
Spirit of St. Louis
Yankee King

Root Coll. A No. 5 Any six 50c Roots, \$2.00

Chemar's
Masterpiece
City of Trenton
Dr. G. H. Carman
Frank Miller
Fred Springer
Golden Goblin
Dorothy Stone
Monmouth
Champion
Prince of Persia
Sanhican Beauty
Snowcap
Yankee King

All 12 Choice Varieties, only \$3.75

Root Coll. A No. 6
Chemar's
Masterpiece
Eliza Clark Bull
Francesca
Harry Mayer
Goblin's Dream
Jane Cowl
Sanhican's
Monarch
W. H. Hogan
Special, 8 Roots,
Book Value \$5.25,
for \$3.00

Root Coll. A No. 7
Kathleen Norris
Mardi Gras
Nanaquacket
Pride of Ft.
Morgan
Rose Fallon
Pride of Stratford
Roycroft
World's Best
White
Root Coll., 8
Good Roots, \$5.00
Book Value, for
\$3.00

Extra Special
Root Coll. B No. 1
New Free
Blooming
Agnes Young
Arcturus
Buckeye King
Delwood's
Glorious
Jersey Dainty
Oriental Splendor
Pres. F. D.
Roosevelt
Ruby Taylor
Any 5 Roots,
\$8.00 Value, for
\$5.00
All 8 Roots with
Rothschild free,
\$9.25

Extra Special
Root Coll. B 2
Free Blooming
Any 6 for \$3.50
Blue Train
Meadowbrook
Fay Beaton
Harvest Moon
Horace Adams
Goblin's Dream
Heitchew's
Beacon
Hillcrest
Mandarin
Omar Khayyam
Snow Cap
Melody
Myra Howard
Elsie Swoboda
Rothschild
Any 10 for \$5.00
The 14 with Ruby
Taylor free, \$8.50

Extra Special
Root Coll. B No. 3
Free Blooming
Tacoma Beauty
Goodacre's
Sensation
Jersey Dainty
Agnes Young
Barbara Jean
Jersey Majestic
Ruby Taylor
Robt. Emmett
Ruth M.
Pres. Roosevelt
Oriental Glory
Tercentenary
Any 4 Roots \$6.00
Any 8 for \$10.00
Entire 12 Roots,
Book Value \$24.00,
for \$14.50
Entire 12 Roots
and a Cavalcade
or Sultan of Hill-
crest free.

Extra Special!

Root Coll. B No. 4, Prize Winning
Cavalcade
Oriental Glory
Sultan of
Hillcrest
Murphys'
Masterpiece
Chautauqua Regal
Princetonian
Goodacres
Sensation
Mrs. Stanley R.
Perry
Oriental Girl
Robt. Emmett
Ruth M.
Sally B.
Any 8 Roots, \$15.00
Entire 12 Roots, Book Value \$32.50,
for \$20.00

With this entire Extra Special 12 Root offer, a root of H. R. S. free.

**WE GROW THE BEST AND
AIM TO PLEASE**

**TRY OUR PLANTS AND
ROOT COLLECTIONS**

**Our Dahlia Gardens are located two miles north of
city limits, corner of Walker and Peach Road.**

Visitors welcome.